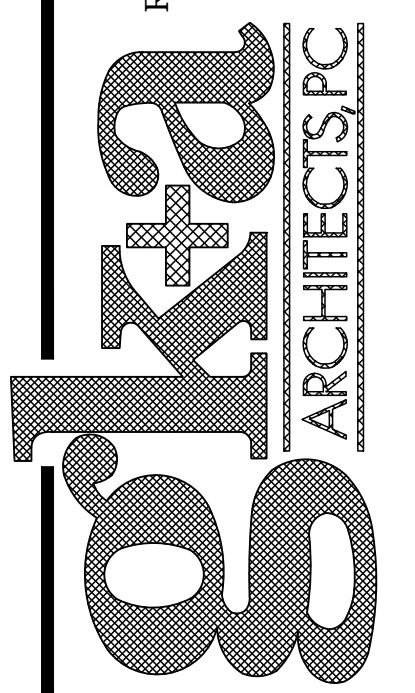


1 PROPOSED PLAN
1/4" = 1'-0" NOTE:

DD OMNI

36 Amers Avenue
Rutherford, NJ 07070
Tel. 201.896.0333
Fax. 201.896.9469
email@gkanda.biz



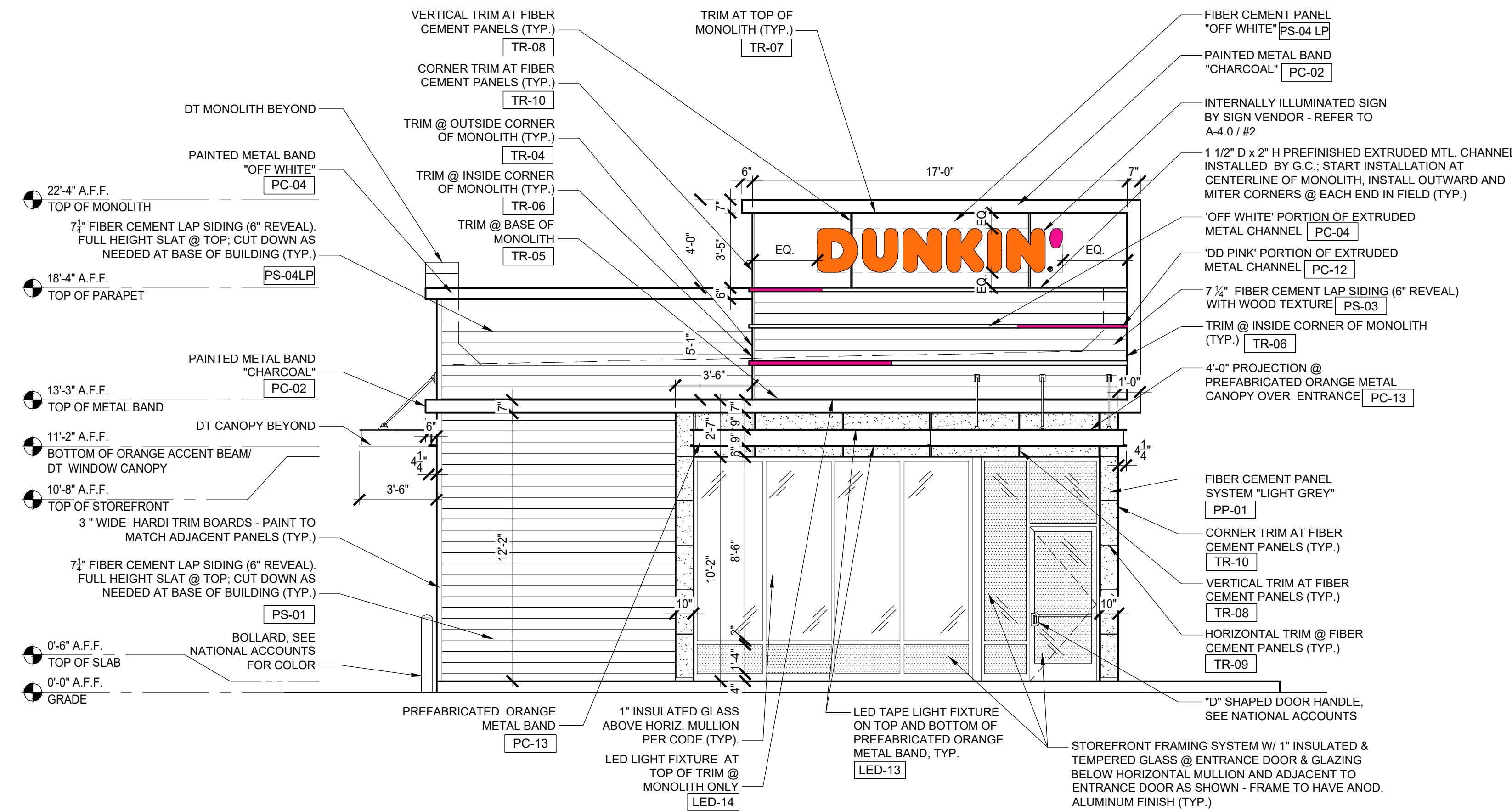
Gary Kliesch and Associate Architects

Rev. No.	Drawing Issues / Revisions	Date
1	Board Comments	12/09/21

NJ: AI 13332	NJCID: 21D00025000	<p>Gary Kliesch A.I.A., N.CARB, N.C.I.D.</p>
NY: 025618	CT: ARI 0009387	
FL: AR95782	DE: SS-007765	
WI: 11180-5	MD: 14129	
PA: RA-015112-B SC: 8835	VA: RA 013863 MI: 1301064135	
D.C.: ARC101888 MA: 10610	NC: 11736 WV: 4568 NH: 04487	
GA: RA 016373 IL: 001.023586		

Proposed
DUNKIN'
baskinBRobbins
BLOCK 20.10 Lot 5.01-80 Godwin Ave.
Midland Park, NJ
PC#359942

Drawing Title: PROPOSED PLAN	
Date: 08/26/21	Dwg No. A
Drawn By: AT	1.0
Checked By: CF	
Job No: 20-205	1 of 6



1 PROPOSED FRONT ELEVATION (WEST)

1/4" = 1'-0"

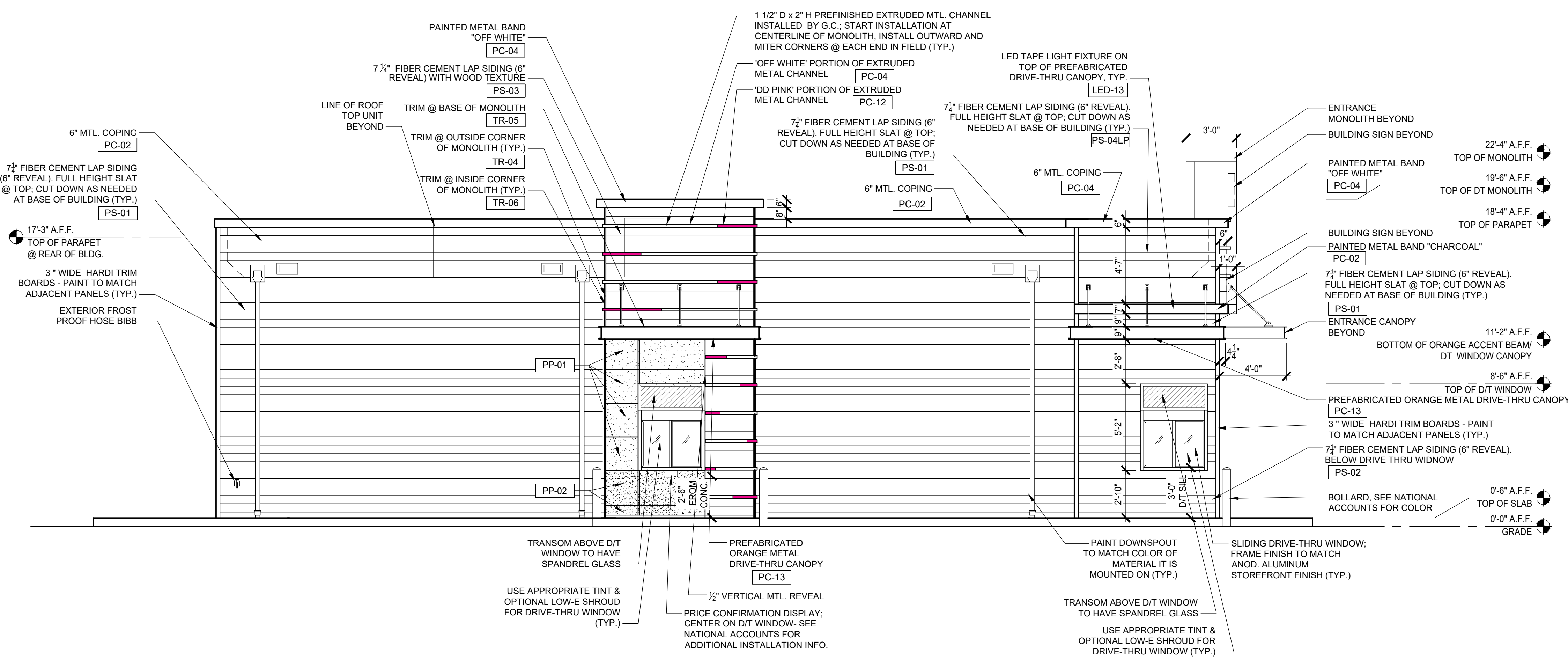
NOTE:

SIGNAGE DATA SCHEDULE

DESCRIPTION	ALLOWED	PROPOSED	VARIANCE
• (1) BLDG. SIGN @ NORTH ELEVATION - ENTRANCE WALL	34-17.8B (1) SIGN ON ANY ENTRANCE WALL PERMITTED	(1) SIGN PROPOSED	NO
PRIMARY SIGNS "DUNKIN" - REFER TO A-4.0/#2	THE MAXIMUM AGGREGATE TOTAL SIGN AREA OF ALL SIGNS SHALL NOT EXCEED 1-1/2 SF. FOR EACH LINEAR FT. OF THE FRONT OF THE BUILDING	DUNKIN SIGN 22.31 SQ. FT. 91.5 SQ FT. ALLOWED	NO
ENTRY FACADE: 61L.F. *1.5 S.F./FT = 91.5 S.F.		DUNKIN SIGN 2' HIGH	NO
MAX. SIGN HEIGHT 2' IF FACADE LESS THAN 40 FT			
• (1) BLDG. SIGN @ WEST ELEVATION (GODWIN AVE)	(1) SIGN ON ANY STREET WALL	(1) SIGN PROPOSED	NO
PRIMARY SIGNS "DUNKIN" - REFER TO A-4.0/#2	THE MAXIMUM AGGREGATE TOTAL SIGN AREA OF ALL SIGNS SHALL NOT EXCEED 1-1/2 SF. FOR EACH LINEAR FT. OF THE FRONT OF THE BUILDING	• (1) DUNKIN' SIGN 22.31 S.F. 22.31 = LESS THAN 49.5 S.F.	NO
33 ft STREET WALL * 1.5 S.F./FT = 49.5 S.F.		DUNKIN SIGN 2' HIGH	NO
MAX. SIGN HEIGHT 2' IF FACADE LESS THAN 40 FT			
TOTAL BUILDING SIGNAGE SQUARE FOOTAGE:		44.62 SQ. FT.	

NOTES

- 1) ZONE: B-1
- 2) SIGNAGE INFORMATION TAKEN FROM THE TOWNSHIP OF MIDLAND PARK ORDINANCE CH. 34 - 34-17.8 SIGNS



2 PROPOSED LEFT-SIDE ELEVATION (SOUTH)

1/4" = 1'-0"

NOTE:

36 Ames Avenue
Rutherford, NJ 07070
Tel. 201.896.0333
Fax. 201.896.9469
email@gkanda.biz

gkanda
ARCHITECTS PC

Gary Kliesch and Associate Architects

Rev. No.	Drawing Issues	Revisions	Date
1	Board Comments		12/09/21

NJ: AI 13332
NY: 025618
FL: AR95762
WI: 11180-5
PA: RA-0151212-B SC: 8935
GA: RA 019863
VA: 401016373
NC: 11736 WV: 4569 NH: 04487

CT: ARI 0009367
DE: SS-0007765
MD: 14129
MA: 10610
MI: 1301064135
IL: 001.023586
WV: 4569 NH: 04487

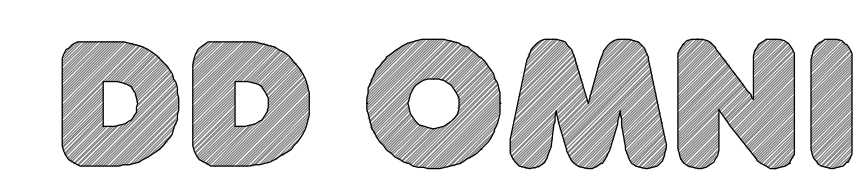
Gary Kliesch
A.I.A., NCAARB, NCID

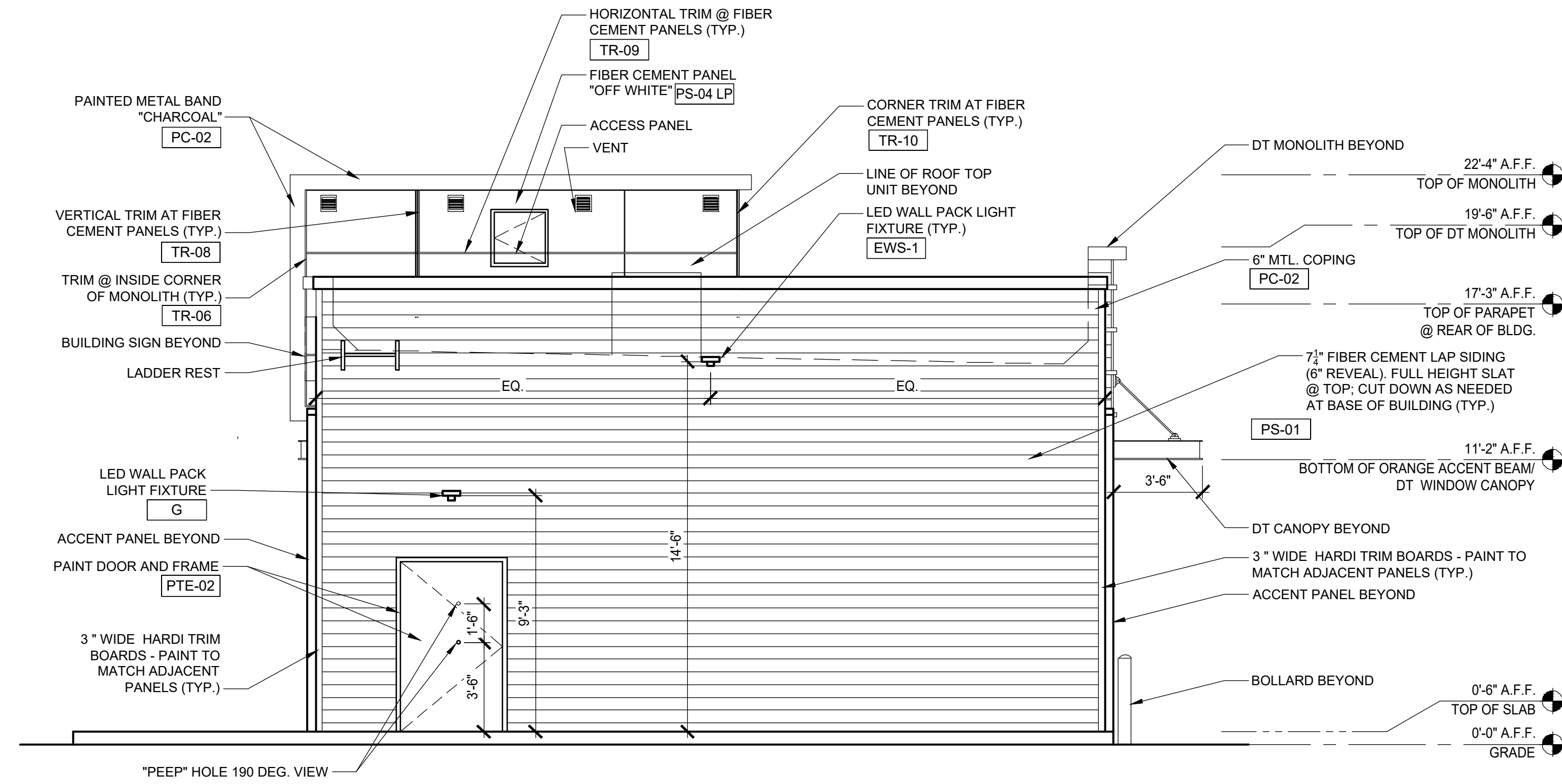
Proposed

DUNKIN'
baskinBRobbins

BLOCK 20.10 Lot 5.01 80 Godwin Ave.
Midland Park, NJ
PC#359942

Drawing Title: PROPOSED ELEVATIONS, SIGNAGE DATA SCHEDULE	
Date: 08/26/21	Dwg No. A 2.0
Drawn By: AT	Checked By: CF
Job No: 20-205	2 of 6





1 PROPOSED REAR ELEVATION (EAST)

1/4" = 1'-0" NOTE:

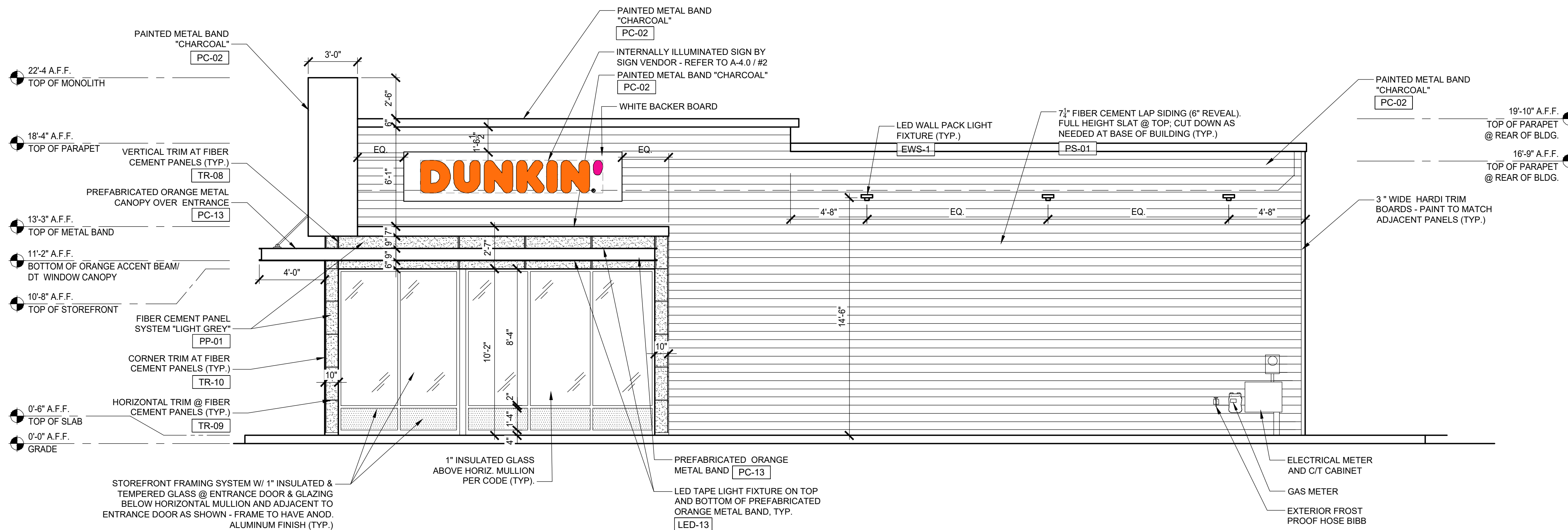
SIGNAGE DATA SCHEDULE

DESCRIPTION	ALLOWED	PROPOSED	VARIANCE
• (1) BLDG. SIGN @ NORTH ELEVATION - ENTRANCE WALL PRIMARY SIGNS "DUNKIN" - REFER TO A-4.0/#2	34-17.8B (1) SIGN ON ANY ENTRANCE WALL PERMITTED THE MAXIMUM AGGREGATE TOTAL SIGN AREA OF ALL SIGNS SHALL NOT EXCEED 1-1/2 SF. FOR EACH LINEAR FT. OF THE FRONT OF THE BUILDING ENTRY FACADE: 61L.F. *1.5 S.F./FT = 91.5 S.F. MAX. SIGN HEIGHT 2' IF FACADE LESS THAN 40 FT	(1) SIGN PROPOSED DUNKIN SIGN 22.31 SQ. FT. 91.5 SQ FT. ALLOWED DUNKIN SIGN 2' HIGH	NO NO NO
• (1) BLDG. SIGN @ WEST ELEVATION (GODWIN AVE) PRIMARY SIGNS "DUNKIN" - REFER TO A-4.0/#2	(1) SIGN ON ANY STREET WALL THE MAXIMUM AGGREGATE TOTAL SIGN AREA OF ALL SIGNS SHALL NOT EXCEED 1-1/2 SF. FOR EACH LINEAR FT. OF THE FRONT OF THE BUILDING 33 ft STREET WALL * 1.5 S.F./FT = 49.5 S.F. MAX. SIGN HEIGHT 2' IF FACADE LESS THAN 40 FT	(1) SIGN PROPOSED • (1) DUNKIN' SIGN 22.31 S.F. 22.31 = LESS THAN 49.5 S.F. DUNKIN SIGN 2' HIGH	NO NO NO

TOTAL BUILDING SIGNAGE SQUARE FOOTAGE: 44.62 SQ. FT.

NOTES

- 1) ZONE: B-1
- 2) SIGNAGE INFORMATION TAKEN FROM THE TOWNSHIP OF MIDLAND PARK ORDINANCE CH. 34 - 34-17.8 SIGNS



2 PROPOSED RIGHT-SIDE ELEVATION (NORTH)

1/4" = 1'-0" NOTE:

36 Ames Avenue
Rutherford, NJ 07070
Tel. 201.896.0333
Fax. 201.896.9469
email@gkanda.biz

gkanda
ARCHITECTS PC

Gary Kliesch and Associate Architects

Rev. No.	Drawing Issues/Revisions	Date
1	Board Comments	12/09/21

NJ: AI 13332
NY: 025618
FL: AR95782
WI: 11180-5
PA: RA-015112B SC: 8935
D.C.: ARC101838 MA:10610
VA: 401016373
NC:11736 WV: 4569 NH:04487

Gary Kliesch
A.I.A., NCAARB, INCID

Proposed

DUNKIN'
baskinBRobbins

BLOCK 20.10 Lot 5.01 80 Godwin Ave.
Midland Park, NJ
PC#359942

Drawing Title: PROPOSED ELEVATIONS (CONT.)	
Date: 08/26/21	Dwg No. A 3.0
Drawn By: AT	Checked By: CF
Job No: 20-205	3 of 6

DD OMNI

EXTERIOR FINISH SCHEDULE

EXTERIOR WALL PAINT

CODE	MATERIAL	MANUFACTURER	PRODUCT #	DESCRIPTION / REMARKS
	PAINT	SHERWIN WILLIAMS	GRAY FINISH	SW 7019 "GAUNTLET GRAY"
	PAINT	SHERWIN WILLIAMS	CHARCOAL FINISH	SW 7069 "IRON ORE"
PTE-04	PAINT	SHERWIN WILLIAMS	OFF WHITE FINISH	SW 7063 "NEBULOUS WHITE"
	PAINT	SHERWIN WILLIAMS OR FACTORY FINISH TO MATCH SW COLOR	WALK-IN BOX	SW 7069 "IRON ORE"
PTE-12	PAINT		DD PINK	COLOR MATCH PMS 219 C MAP ULTRA LOW V.O.C.
PTE-13	PAINT		DD ORANGE	COLOR MATCH PMS 165C MAP ULTRA LOW V.O.C.

EXTERIOR FIBER-CEMENT CLADDING SYSTEMS

CODE	MATERIAL	MANUFACTURER	PRODUCT #	DESCRIPTION / REMARKS
	FIBER-CEMENT CLADDING	NICHIHA	GRAY FINISH TUFFBLOCK "PEWTER" EPF641F	COLOR: "PEWTER" SURFACE: STANDARD Dimension: 17 7/8"H x 19 5/16"L x 5/8" TH TRIM: NICHIHA MTCK-01 METAL TRIM CORNER KEY 1 1/2" X 1/2" COLOR: CLEAR ANNOXIDIZED
	FIBER-CEMENT CLADDING	NICHIHA	CHARCOAL FINISH TUFFBLOCK "STEEL" EPF644F	COLOR: "STEEL" SURFACE: STANDARD Dimension: 17 7/8"H x 19 5/16"L x 5/8" TH TRIM: NICHIHA MTCK-01 METAL TRIM CORNER KEY 1 1/2" X 1/2" COLOR: CLEAR ANNOXIDIZED

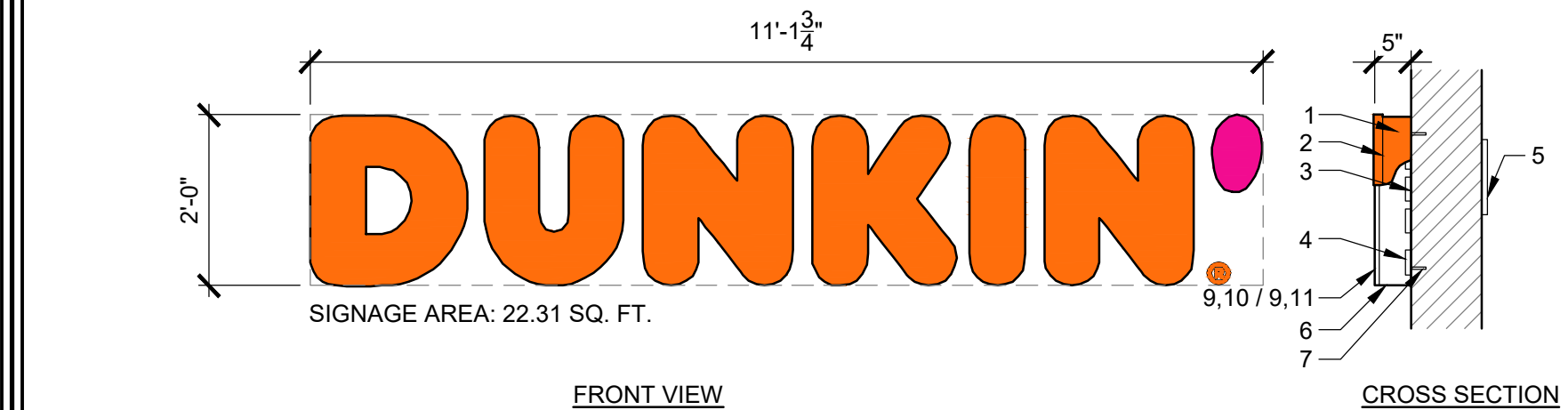
EXTERIOR FIBER-CEMENT EXTERIOR SIDING AND PANELS

CODE	MATERIAL	MANUFACTURER	PRODUCT #	DESCRIPTION / REMARKS
	FIBER CEMENT PANEL	JAMES HARDIE	GRAY FINISH	COLOR: "AGED PEWTER" SURFACE: HARDIE SIDING OR COLOR: "PRIMED FINISH" FIELD PAINT TO MATCH PTE-01 DIMENSION: 8 1/4" X 12" X 5/16" THK WITH 6" SIDING EXPOSURE
	FIBER CEMENT SIDING	JAMES HARDIE	CHARCOAL FINISH	COLOR: "IRON GRAY - VOLCANO GRAY" SURFACE: HARDIE SIDING OR COLOR: "PRIMED FINISH" FIELD PAINT TO MATCH PTE-02 DIMENSION: 8 1/4" X 12" X 5/16" THK WITH 6" SIDING EXPOSURE
PS-03	FIBER CEMENT SIDING	WOODTONE	WOOD FINISH RUSTIC SERIES WOODTONE	COLOR: "HONEY GLAZE" WOOD PATTERN SURFACE: WOOD PATTERN PLANK DIMENSION: 8 1/4" X 12" X 5/16" THK WITH 6" SIDING EXPOSURE NOTE: NAILS TO MATCH WOOD FINISH
PS-04 LP	FIBER CEMENT PANEL	JAMES HARDIE	OFF WHITE FINISH LARGE FORMAT PANEL	COLOR: "ARCTIC WHITE" SURFACE: PRE-FINISHED REVEAL PANEL DIMENSION: (5'16" x 48" X 96") WITH COLOR MATCHED TRIMS AND COLOR MATCHED SCREWS OR COLOR: "PRIMED FINISH" FIELD PAINT TO MATCH PTE-04

EXTERIOR METAL TRIM

CODE	MATERIAL	MANUFACTURER	PRODUCT #	DESCRIPTION / REMARKS
	METAL	TAMLYN	EXTRUDED METAL CHANNEL USED AT TOWER ELEMENT	PINK ACCENT BAND SEE SF03 (PINK)
	METAL	HORACIO		
	METAL	AGI		
TR-02	METAL	TAMLYN	EXTRUDED METAL CHANNEL USED AT TOWER ELEMENT	OFF WHITE ACCENT BAND SEE SF04 (WHITE)
	METAL	HORACIO		
	METAL	AGI		
TR-04	METAL	TAMLYN	(XOCLP34) OUTSIDE CORNER TRIM. USED AT TOWER ELEMENT	TO MATCH FIBER CEMENT LAP SIDING PS-03
TR-05	METAL	TAMLYN	(XS516) BOTTOM "STARTER" TRIM. USED AT TOWER ELEMENT	CLEAR ANODIZED
TR-06	METAL	TAMLYN	(JMH34) VERTICAL TERMINATION TRIM-TYP. USED AT TOWER ELEMENT	FACTORY FINISH TO MATCH FIBER CEMENT LAP SIDING PS-03
TR-07	METAL	TAMLYN	(JMH716) TOP TRIM USED AT TOWER ELEMENT	FACTORY FINISH TO MATCH FIBER CEMENT LAP SIDING PS-03
TR-08	METAL	JAMES HARDIE	JH SURROUND VERTICAL TRIM	FINISH: FACTORY CLEAR ANODIZED 16 GA TRIM AVAILABLE IN 8'-0" LENGTHS. USED WITH JAMES HARDIE REVEAL PANELS
TR-10	METAL	JAMES HARDIE	JH SURROUND OUTSIDE CORNER TRIM	FINISH: FACTORY CLEAR ANODIZED 16 GA TRIM AVAILABLE IN 8'-0" LENGTHS. USED WITH JAMES HARDIE REVEAL PANELS

1	NOT USED
1/2"=1'-0"	NOTE:



SIGNAGE AREA: 22.31 SQ. FT.
DUNKIN' LED ILLUMINATED CHANNEL LETTERS

NOTE:
SIGNAGE SHALL BE COMPOSED OF INDIVIDUAL LETTERS.
G.C. TO ENSURE ALL ELECTRICAL CONNECTIONS ARE CONCEALED
AND NOT VISIBLE

- NOTES:
- .05" x 5" ALUMINUM RETURNS PAINTED TO MATCH PMS 7540C.
 - 1" TRIM CAP TO MATCH JEWELITE 313 BRONZE.
 - .063" ALUMINUM BACKING.
 - GE TETRA MAX 7100K WHITE LED'S.
(OR GE REPLACEMENT EQUIVALENT).
 - REMOTE POWER SUPPLY, AS REQUIRED.
 - DRAIN HOLES, AS REQUIRED.
 - MOUNTING HARDWARE, AS DETERMINED BY SITE CONDITIONS.
 - .063" ALUMINUM DISK PAINTED WHITE (REGISTERED "R").
 - 3/16" THICK WHITE ACRYLIC FACE.
 - 3M #3630-3123 DUNKIN' ORANGE TRANSLUCENT FILM 1ST SURFACE.
 - 3M #3630-1379 DUNKIN' PINK TRANSLUCENT FILM 1ST SURFACE.

- ADDITIONAL NOTES:
- ARTWORK FONT: DUNKIN SANS DISPLAY
 - CHANNEL LETTER INTERIOR PAINTED REFLECTIVE WHITE
 - ELECTRICAL: (1) 20-AMP / 120 VOLT CIRCUIT
 - U.L. LISTED
 - LED'S TO BE POPULATED FOR EVEN AND CONSISTENT LIGHTING
WITHOUT HOT SPOTS OR SHADOWS

COLORS:

PMS	VINYL/PAINT
PMS 165 DD ORANGE	TRANS 3M #3630-3123
PMS 219 DD PINK	TRANS 3M #3630-1379
PMS 7540C DD GRAY	TRANS 3M #7725-41
PMS COOL GRAY 1C	TRANS 3M #7725-11

- INSTALLATION:
- BY VIEWPOINT
 - NOTE: POWER BY OTHERS
 - THIS SIGN IS INTENDED TO BE INSTALLED IN ACCORDANCE WITH THE
REQUIREMENTS OF ARTICLE 600 OF THE NATIONAL ELECTRICAL CODE
(NEC) AND/OR OTHER APPLICABLE LOCAL ELECTRICAL CODES (LEC).
THIS INCLUDES PROPER GROUNDING AND BONDING OF THE SIGN.

NOTE:
SEE DUNKIN' BRANDS WEBSITE. <http://extranet.dunkinbrands.com>.
FOR COMPLETE INFORMATION AND DETAILS

2	BUILDING SIGN
1/2"=1'-0"	NOTE:

36 Ames Avenue
Rutherford, NJ 07070
Tel. 201.896.0333
Fax. 201.896.9469
email@gkanda.biz

gkanda
ARCHITECTS, PC

Gary Kliesch and Associate Architects

Rev. No.	Drawing Issues / Revisions	Date
1 <td>Board Comments <td>12/09/21 </td></td>	Board Comments <td>12/09/21 </td>	12/09/21

NJ: AI 13332
NY: 028618
FL: AR95762
WI: 11180-5
PA: RA-015112B SC: 8935
D.C.: ARC101838 MA: 10610
GA: RA 013983 MI: 1301064135
VA: 401016373 IL: 001.023586
NC: 11736 WV: 4569 NH: 04487

Gary Kliesch
AIA, NCARB, NCID

Proposed

DUNKIN'
baskinBRobbins

BLOCK 20.10 Lot 5.01 80 Godwin Ave.
Midland Park, NJ
PC#359942

Drawing Title:
EXTERIOR FINISH MATERIAL
SCHEDULE

Date:	Dwg No.
08/26/21	A
Drawn By:	4.0
AT	
Checked By:	CF
Job No:	4 of 6
20-205	

Rev. No.	1
Drawing Issues / Revisions	Board Comments
Date	12/09/21

NJ: AI 13332	NJCID: 21D00025000
NY: 025618	CT: ARI0009367
FL: AR95762	DE: SS-0007765
WI: 11180-5	MD: 14129
PA: RA-015112B	SC: 8935
D.C.: ARC101838	MA: 10610
GA: RA 019863	MI: 1301064135
VA: 401016373	IL: 001.023586
NC: 11736	WV: 4569
	NH: 04487

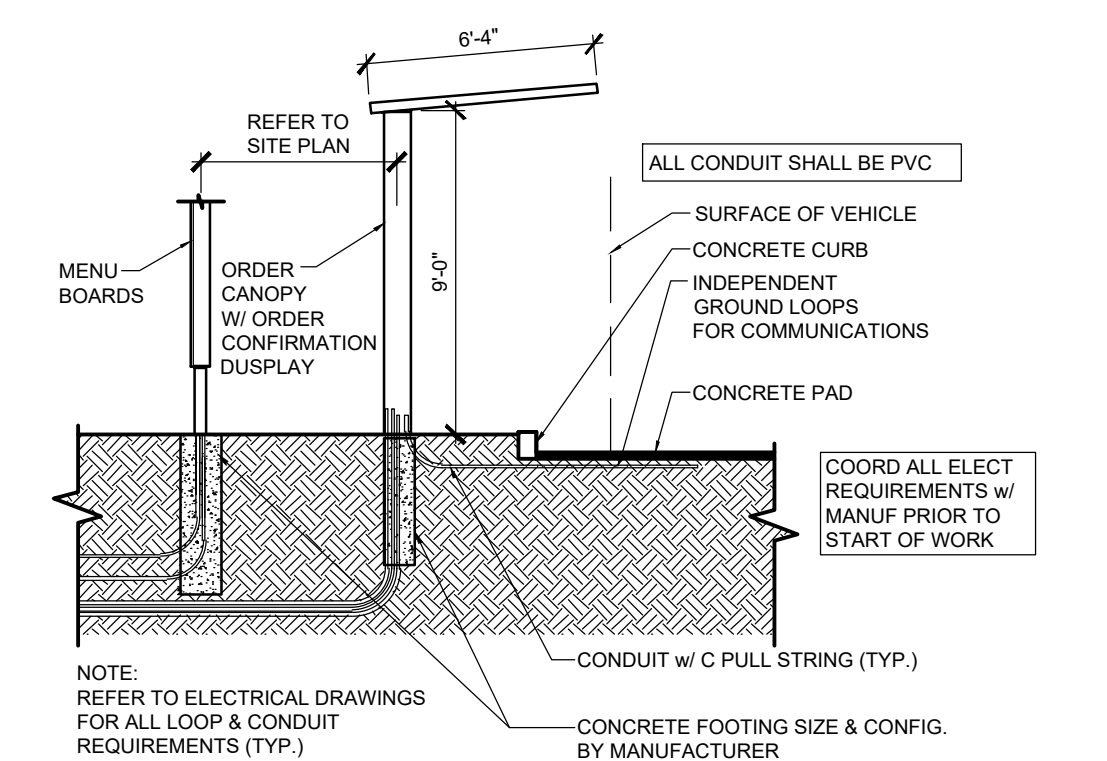
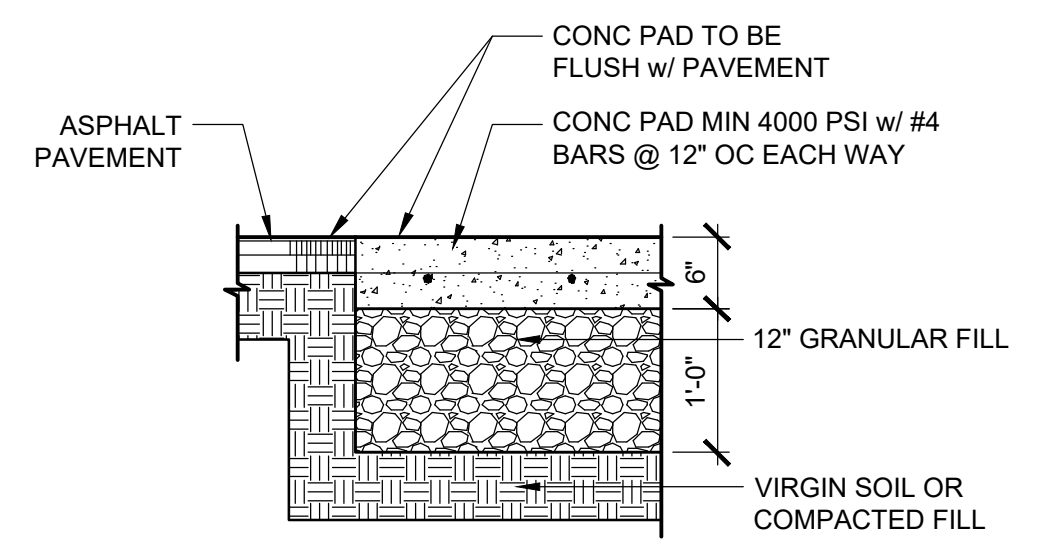
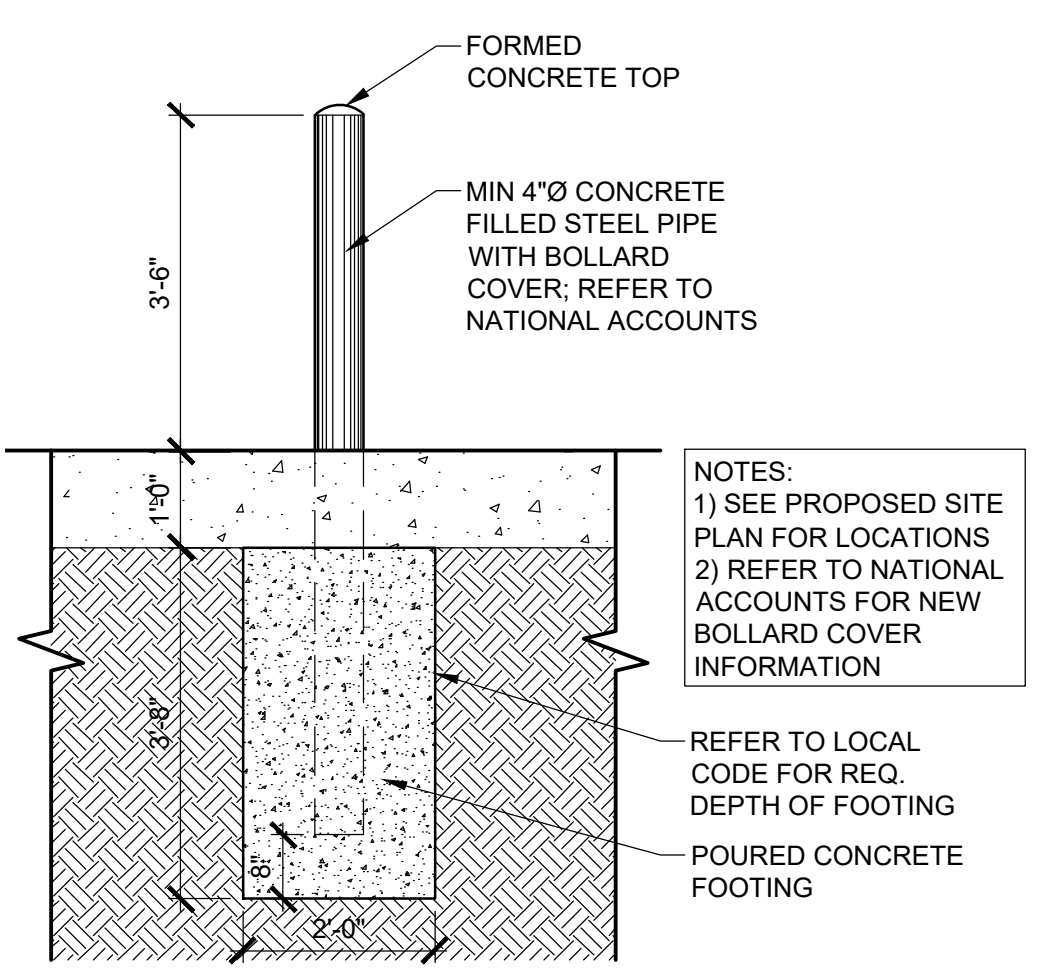
Gary Kliesch
A.I.A., N.A.A.S.P., N.C.S.B.

Proposed

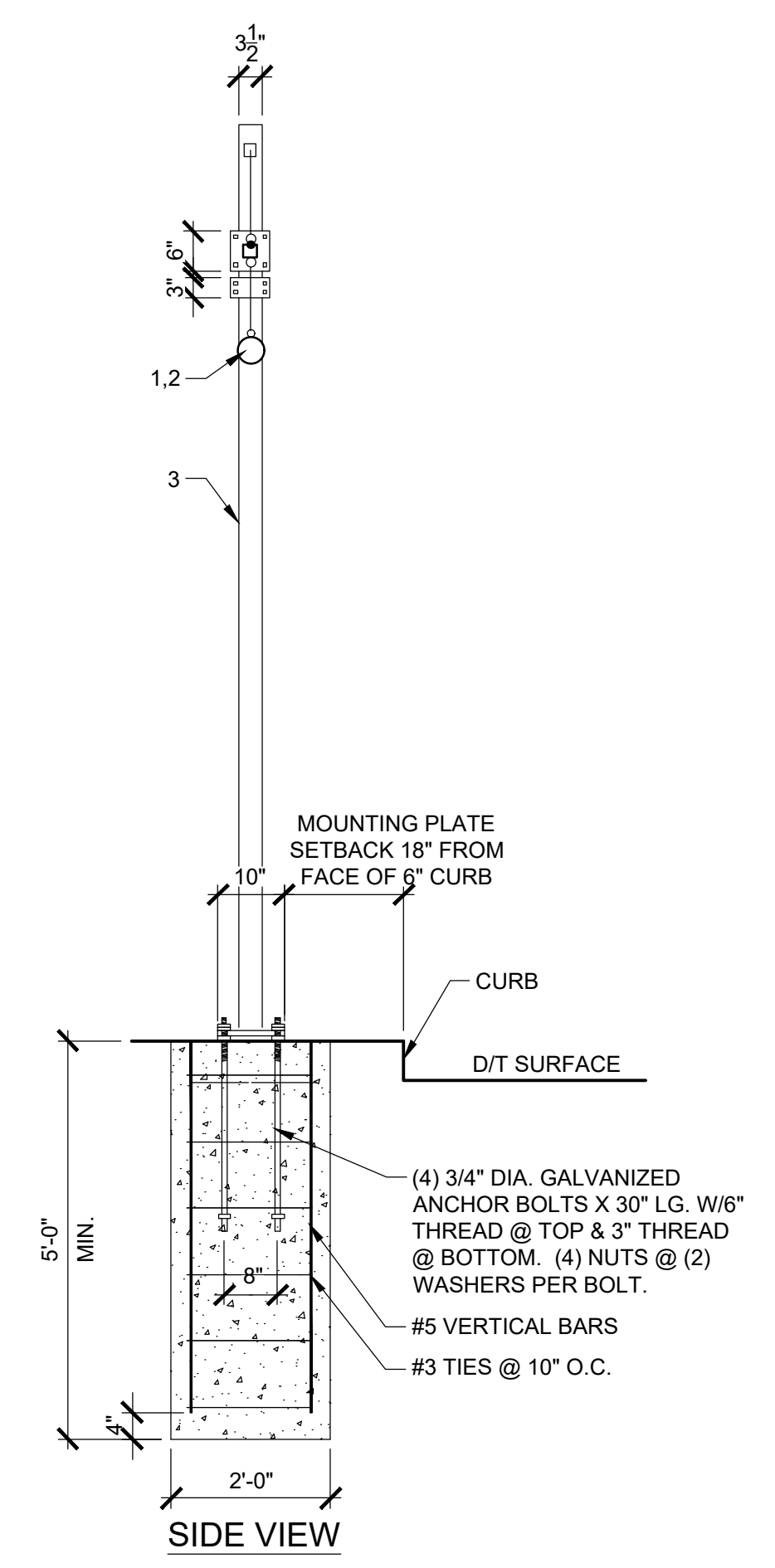
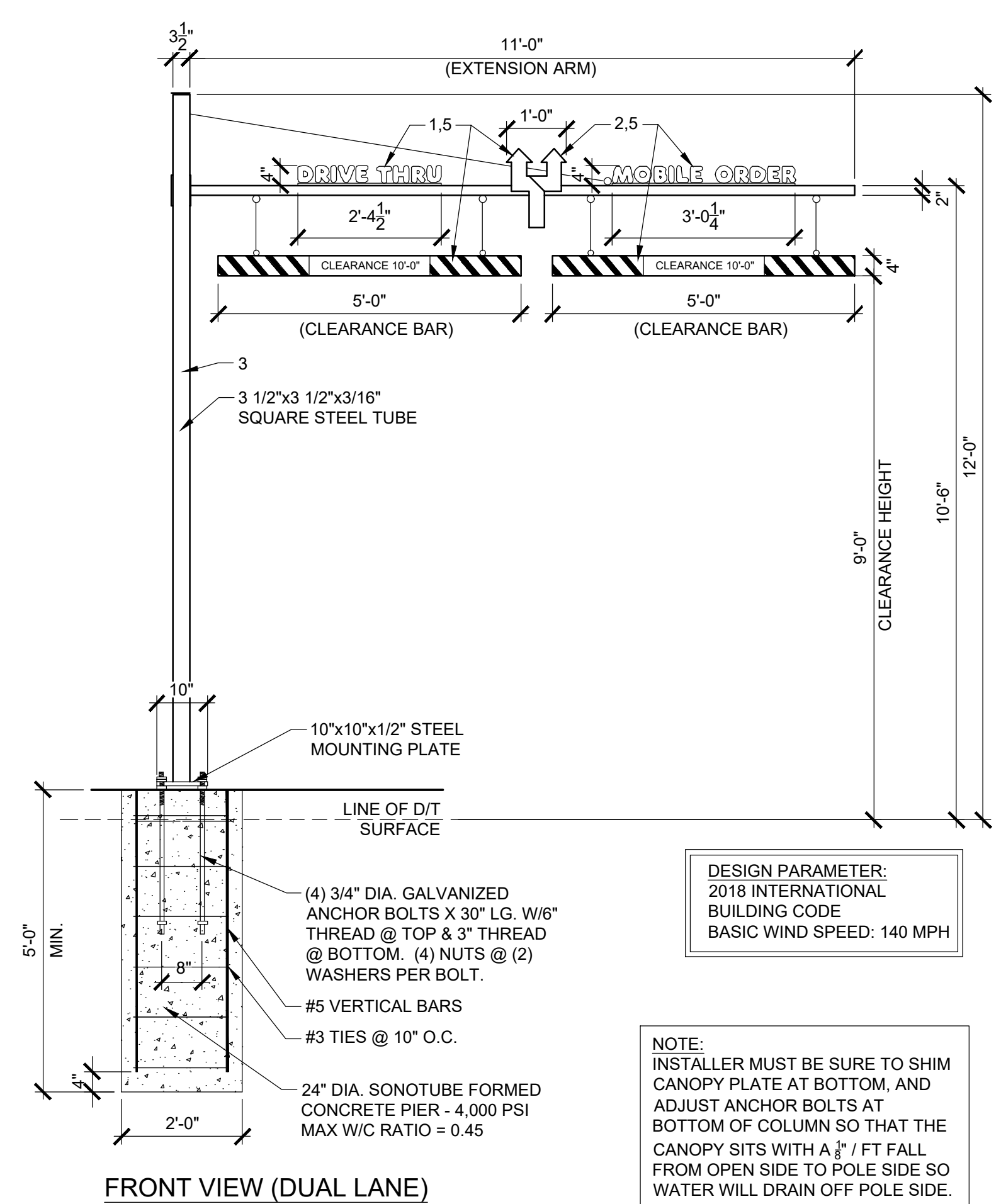
DUNKIN'
baskinBRobbins

BLOCK 20.10 Lot 5.01 80 Godwin Ave.
Midland Park, NJ
PC#359942

Drawing Title: SITE AND SIGNAGE DETAILS	
Date: 08/26/21	Dwg No. A 5.0
Drawn By: AT	Checked By: CF
Job No: 20-205	5 of 6



1 NOT USED
1/2" = 1'-0" NOTE:



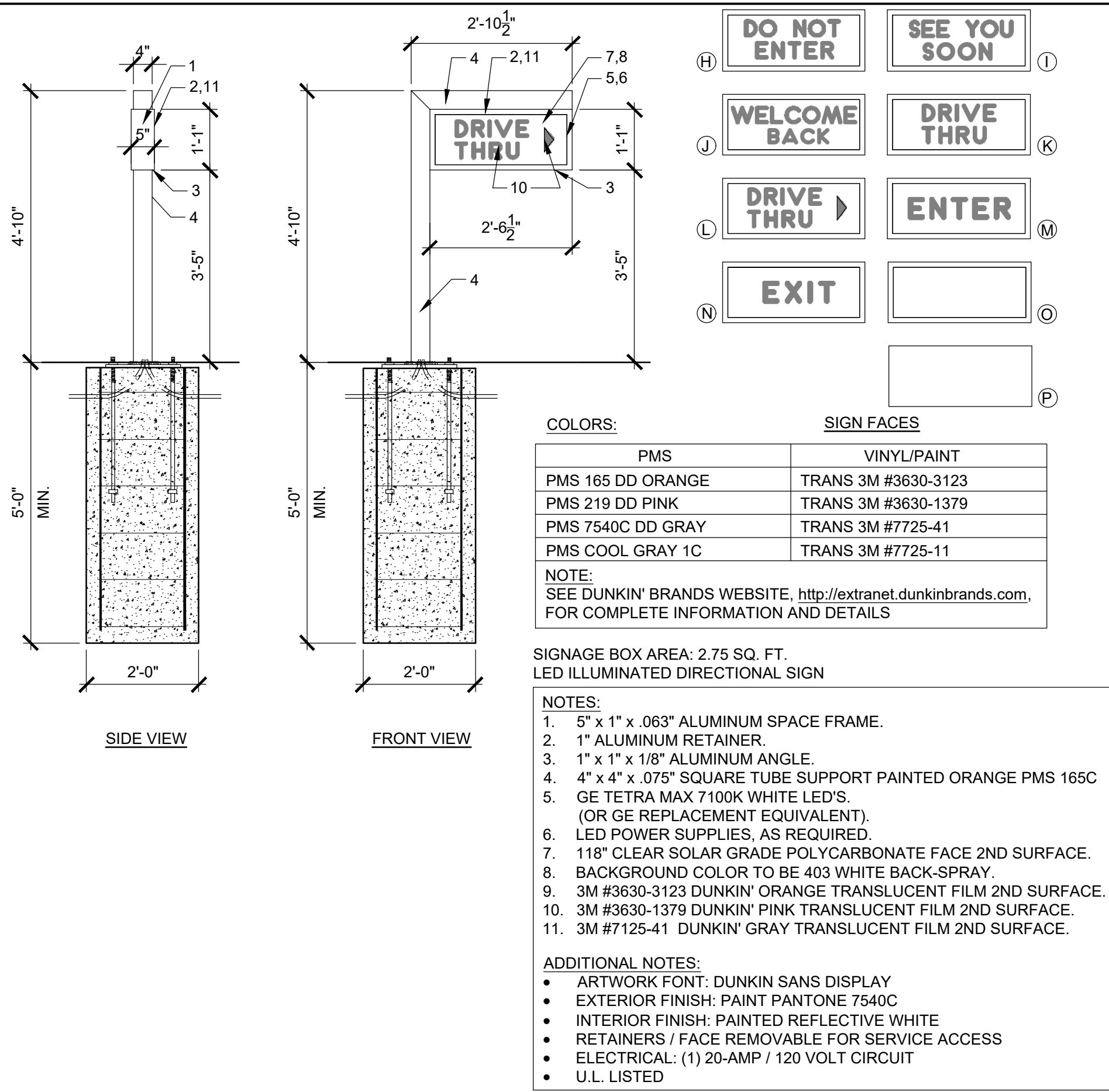
- NON-ILLUMINATED DRIVE-THRU STRUCTURE
- NOTES:
- PAINT TO MATCH ORANGE PMS 165C, GLOSS FINISH.
 - PAINT TO MATCH PINK PMS 219C, GLOSS FINISH.
 - PAINT TO MATCH PMS COOL GRAY 1C, GLOSS FINISH.
 - OPTIONAL 24" x 24" MEDALLION SIGN WITH REMOVABLE / ADJUSTABLE PLATES, SINGLE SIDED VINYL.
 - OPTIONAL REFLECTIVE FILM:
3M L6800R-10 SCOTCHLITE REFLECTIVE MCS (LATEX OR SOLVENT INKS)
8519 LUSTER PROTECTIVE LAMINATE PRINTED TO MATCH.
- PMS 165 DUNKIN' ORANGE
 - PMS 219 DUNKIN' PINK
 - PMS 7540C DUNKIN' GRAY
 - PMS COOL GRAY 1C

COLORS:

PMS	VINYL/PAINT
PMS 165 DD ORANGE	TRANS 3M #3630-3123
PMS 219 DD PINK	TRANS 3M #3630-1379
PMS 7540C DD GRAY	TRANS 3M #7725-41
PMS COOL GRAY 1C	TRANS 3M #7725-11

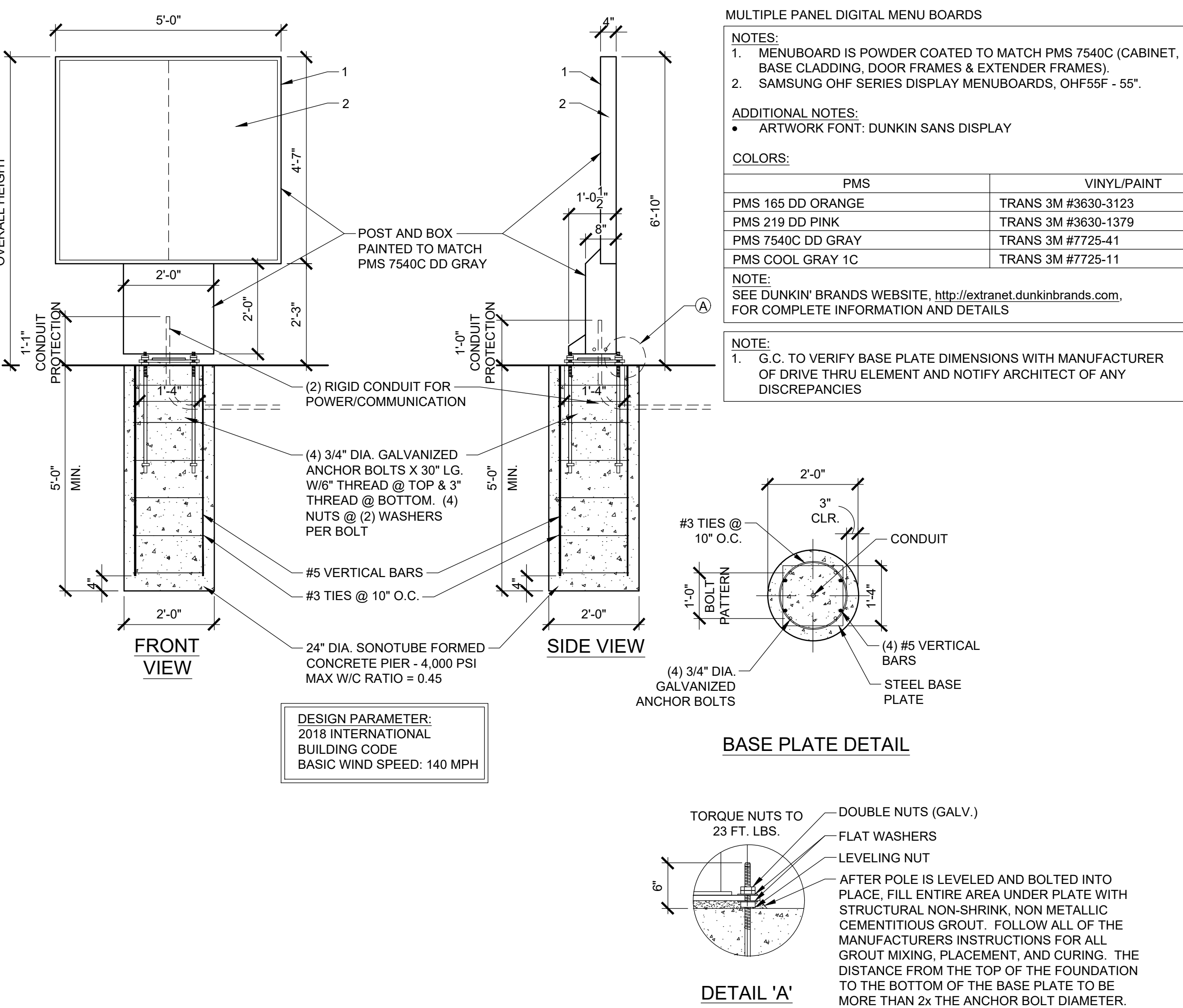
- NOTE:
SEE DUNKIN' BRANDS WEBSITE, <http://extranet.dunkinbrands.com>.
FOR COMPLETE INFORMATION AND DETAILS
- ADDITIONAL NOTES:
- ARTWORK FONT: DUNKIN SANS DISPLAY
 - 120 VOLT CIRCUIT, TO BE CONFIRMED BY SITE
 - CLEARANCE TO BE CONFIRMED BY SITE

- NOTE:
- G.C. TO VERIFY BASE PLATE DIMENSIONS WITH MANUFACTURER OF DRIVE THRU ELEMENT AND NOTIFY ARCHITECT OF ANY DISCREPANCIES



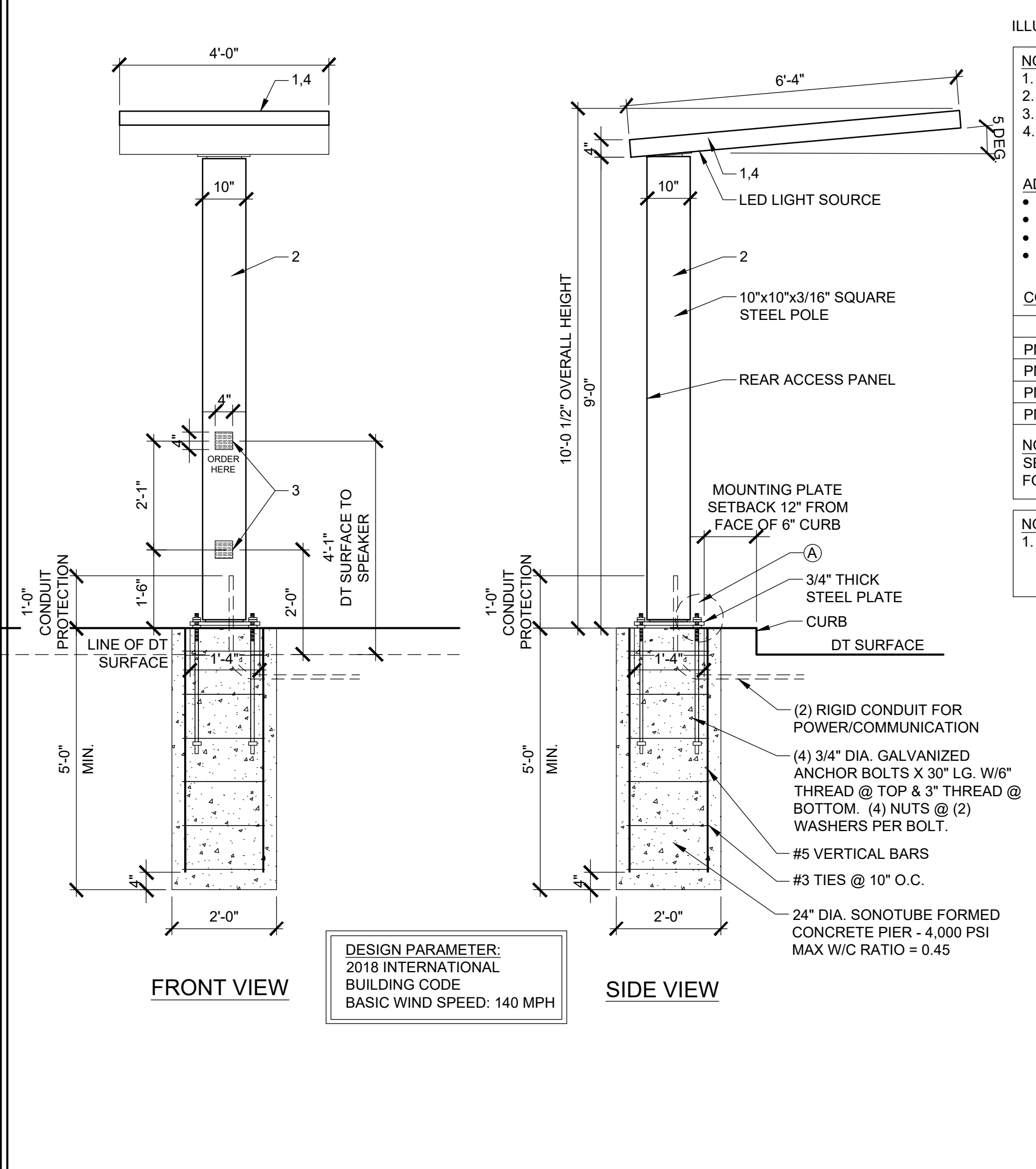
2 DIRECTIONAL SIGN DETAILS

1/2" = 1'-0" NOTE:



3 DRIVE-THRU DIGITAL MENU BOARD DETAIL

N.T.S. NOTE:



4 ORDER CANOPY DETAIL

1/2" = 1'-0" NOTE:

Rev. No.	Drawing Issues / Revisions	Date
1	Board Comments	12/09/21

gkanda ARCHITECTS, PC

Gary Kliesch
A.I.A., N.A.A.S.P., N.C.I.D.

NJ: AI 13332
NY: 025618
FL: AR95762
WI: 11180-5
PA: RA-015112B SC: 8935
GA: RA 019863 MI: 1301064135
VA: 401016373 IL: 001.023586
NC: 11736 WV: 4569 NH: 04487

Proposed

DUNKIN'
baskinBRobbins

BLOCK 20.10 Lot 5.01 80 Godwin Ave.
Midland Park, NJ
PC#359942

Drawing Title: SITE AND SIGNAGE DETAILS

Date: 08/26/21	Dwg No. A
Drawn By: AT	6.0
Checked By: CF	
Job No: 20-205	6 of 6