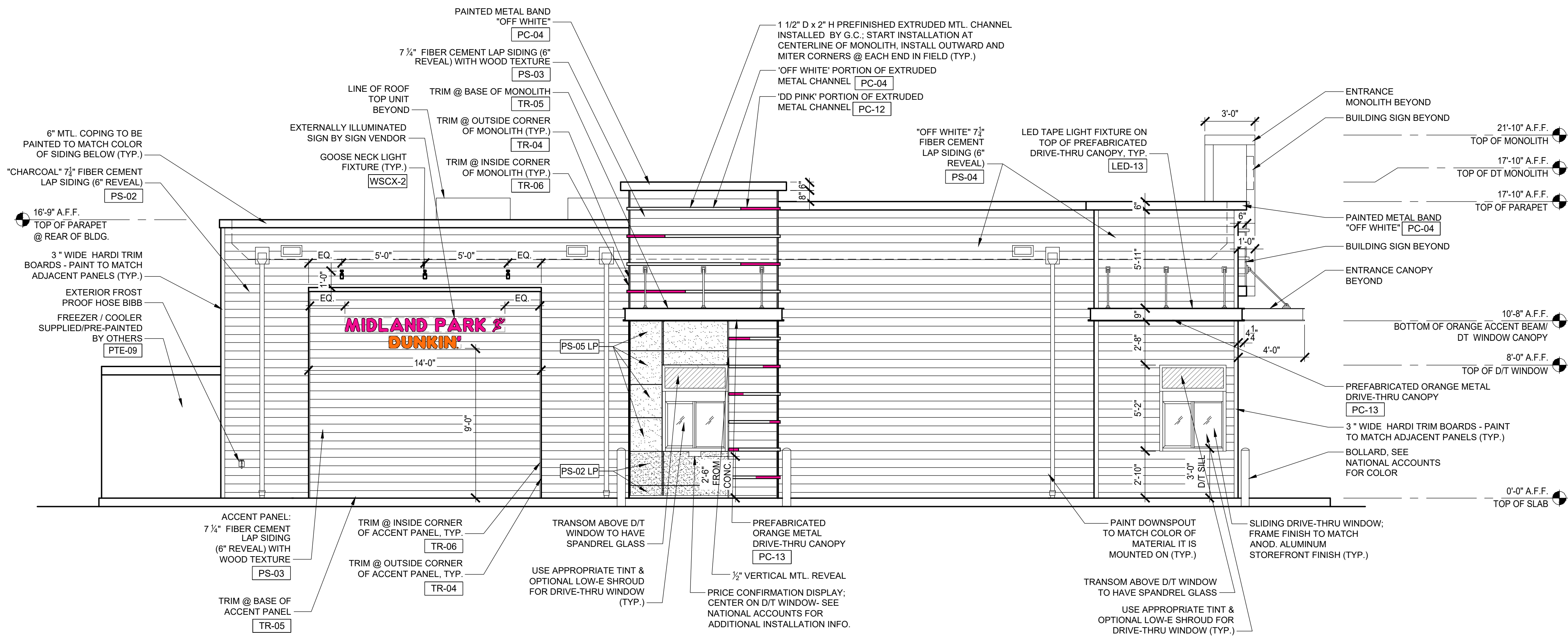


1 PROPOSED FRONT ELEVATION

1/4" = 1'-0"

NOTE:



2 PROPOSED LEFT-SIDE ELEVATION

1/4" = 1'-0"

NOTE:

DD OMNI

| Rev. No. | Drawing Issues / Revisions | Date |
|----------|----------------------------|------|
| | | |

2100025000

NJ: AI 13332
NY: 025618
FL: AR95782
WI: 11180-5
PA: RA-015112-B SC: 8935
D.C.: ARC101838 MA: 10610
VA: 401016373 IL: 001.023586
NC: 11736 WV: 4569 NH: 04487

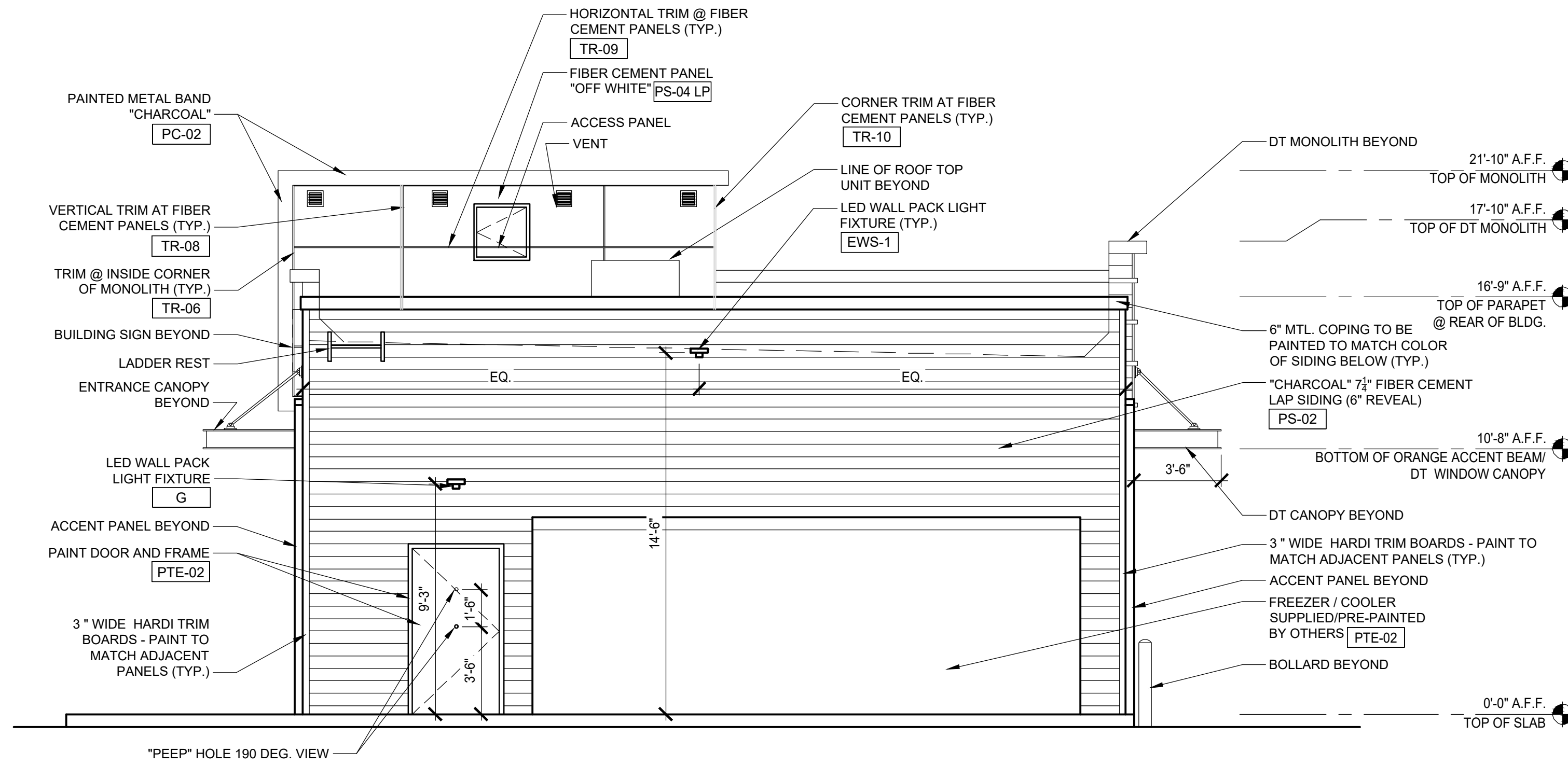
Gary Kliesch
A.I.A., NCARB, INCOB

Proposed

DUNKIN'
baskin/robbins

BLOCK 20.10 Lot 5.01 80 Godwin Ave.
Midland Park, NJ
PC#359942

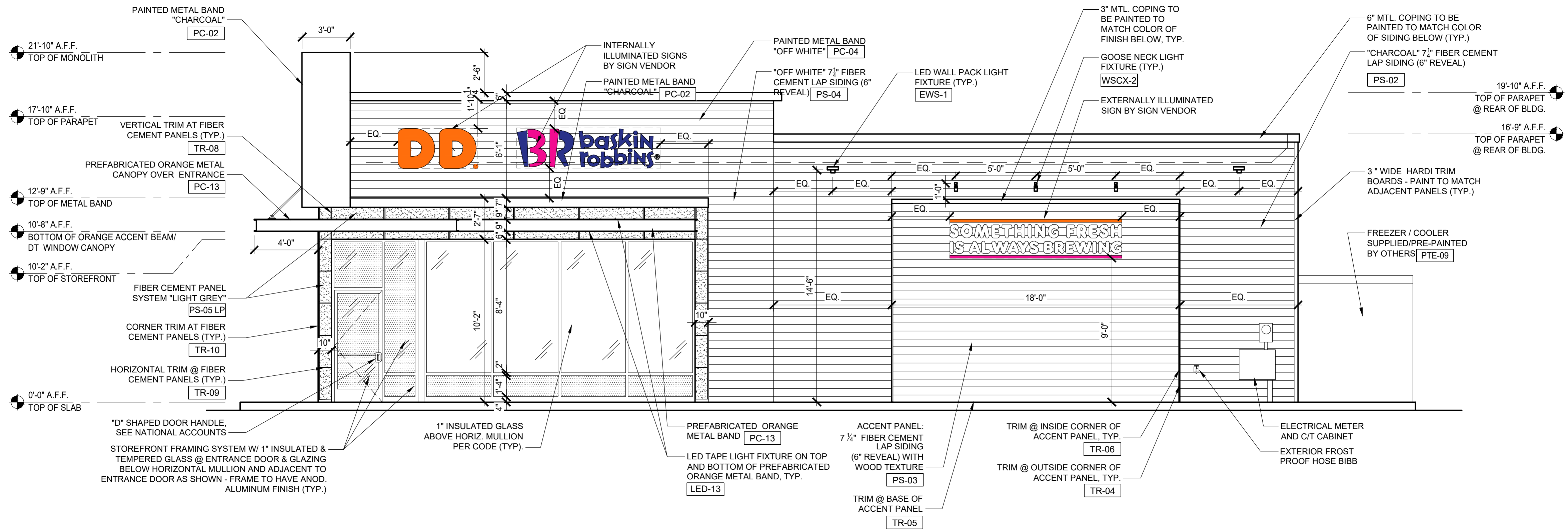
| | |
|---|---------------------|
| Drawing Title: PROPOSED ELEVATIONS, SIGNAGE DATA SCHEDULE | |
| Date: 03/18/21 | Dwg No. A 2.0 |
| Drawn By: AT | |
| Checked By: CF | |
| Job No: 20-205 | 2 of 6 |



1 PROPOSED REAR ELEVATION

1/4" = 1'-0"

NOTE:



2 PROPOSED RIGHT-SIDE ELEVATION

1/4" = 1'-0"

NOTE:

DD OMNI

| Rev. No. | Drawing Issues / Revisions | Date |
|----------|----------------------------|------|
| | | |

NJ: AI 13332 NJCID: 21D00026000
NY: 025618 CT: ARI0009367
FL: AR95762 DE: SS-0007765
WI: 11180-5 MD: 14129
PA: RA-0151128 SC: 8935
D.C.: ARC101838 MA: 10610
GA: RA 019863 MI: 1301064135
VA: 401016373 IL: 001.023586
NC: 11736 WV: 4569 NH: 04487

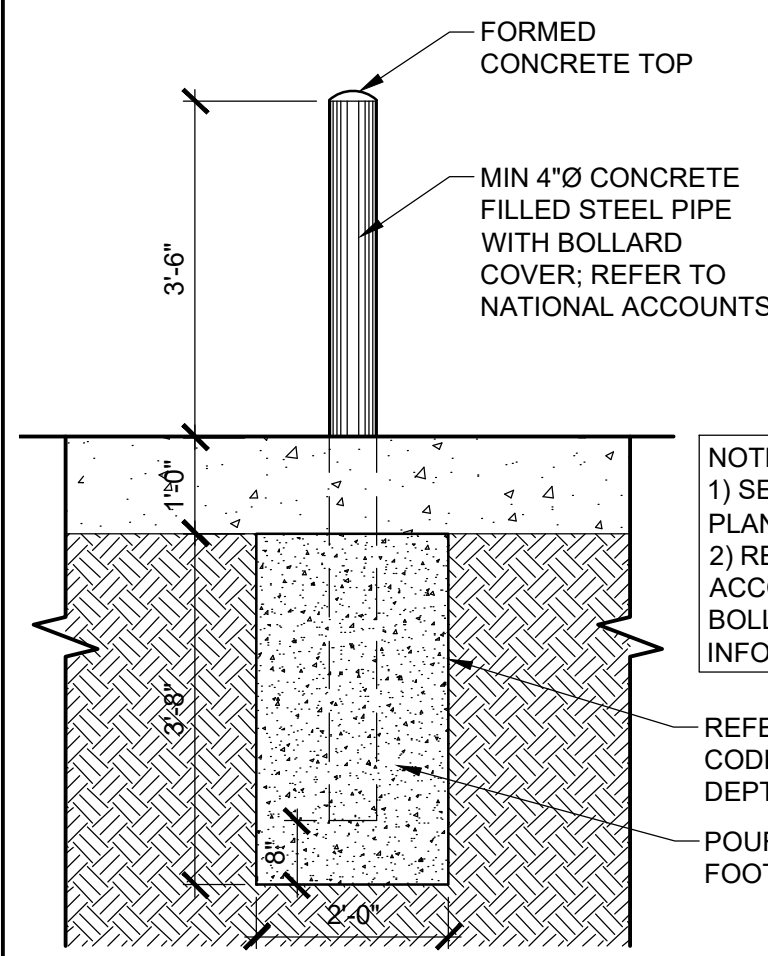
Gary Kliesch
A.I.A., NCAARB, INCID

Proposed

DUNKIN'
baskin/BR robbins

BLOCK 20.10 Lot 5.01 80 Godwin Ave.
Midland Park, NJ
PC#59942

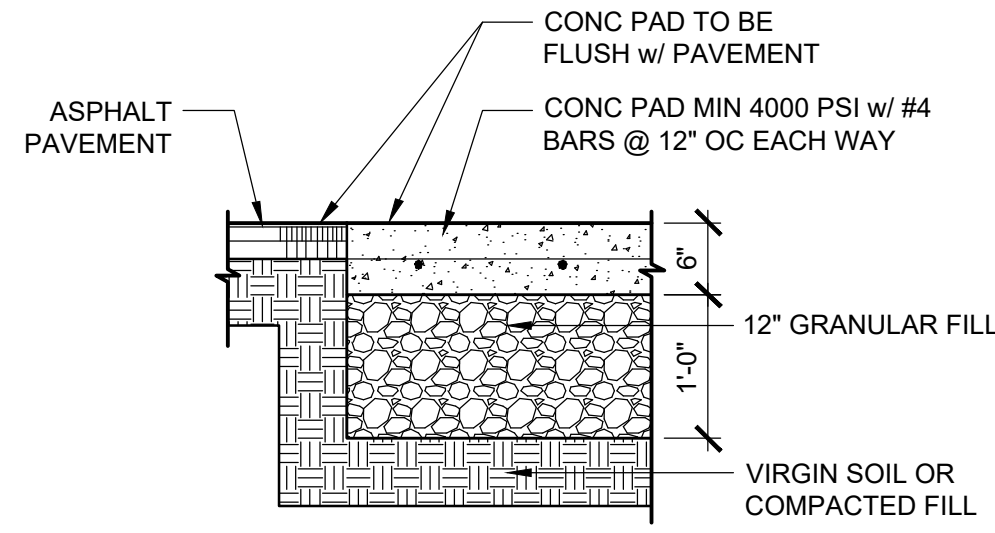
| | |
|---|---------------------|
| Drawing Title: PROPOSED ELEVATIONS (CONT.) | |
| Date: 03/18/21 | Dwg No. A 3.0 |
| Drawn By: AT | |
| Checked By: CF | |
| Job No: 20-205 | 3 of 6 |



NOTES:
 1) SEE PROPOSED SITE PLAN FOR LOCATIONS
 2) REFER TO NATIONAL ACCOUNTS FOR NEW BOLLARD COVER INFORMATION
 REFER TO LOCAL CODE FOR REQ. DEPTH OF FOOTING
 POURED CONCRETE FOOTING

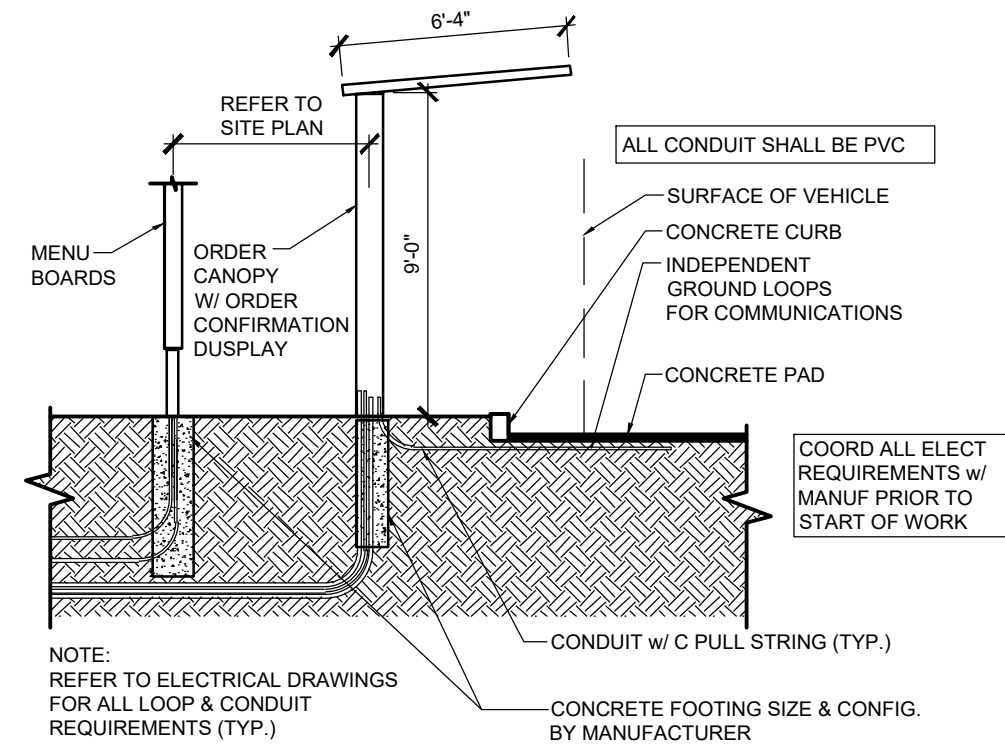
1 BOLLARD DETAIL

1/2" = 1'-0" NOTE:



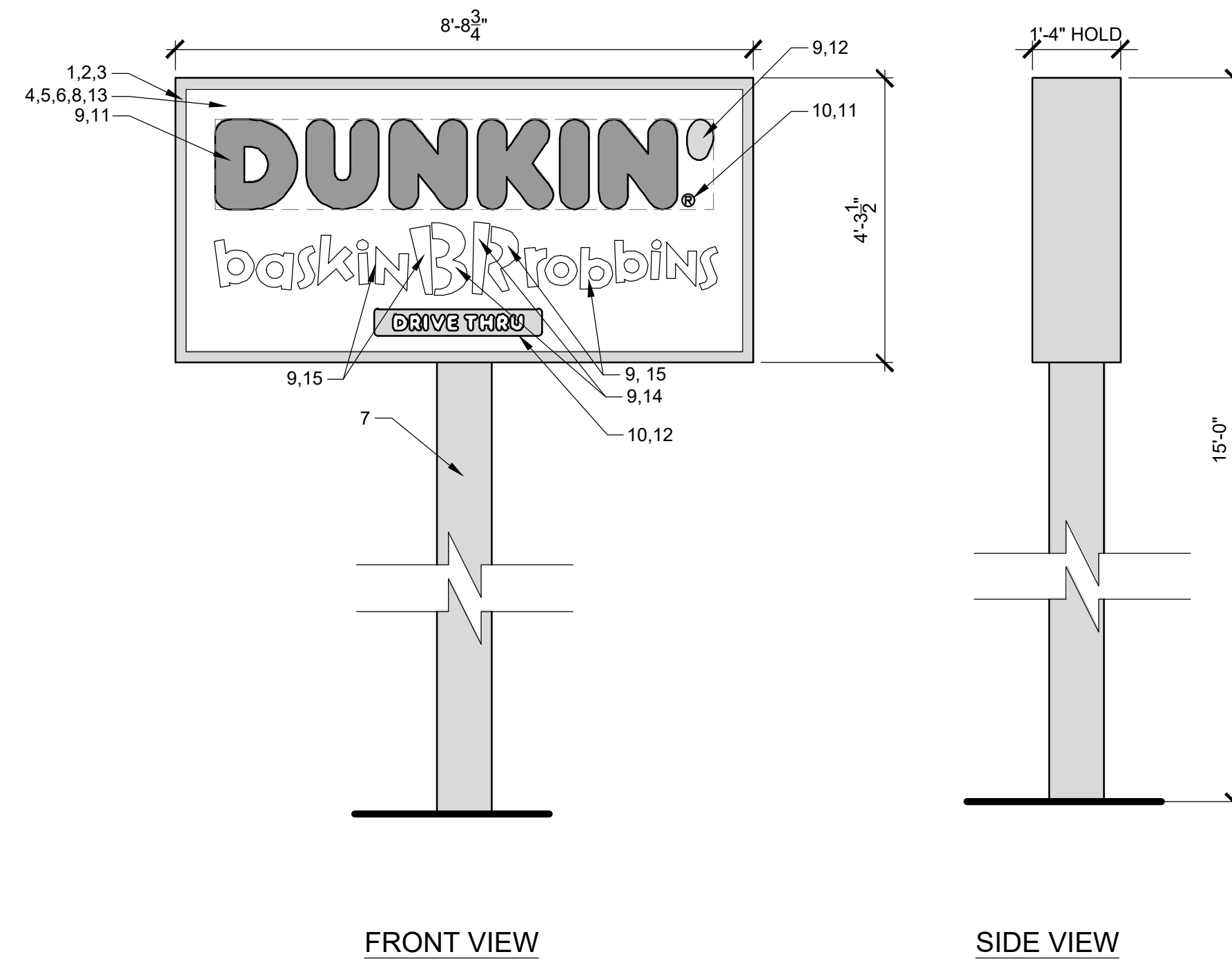
2 SECTION @ CONC. PAD

3/4" = 1'-0" NOTE:



3 MENU BOARD CONDUIT DETAIL

N.T.S. NOTE:



FRONT VIEW

SIDE VIEW

LED ILLUMINATED PYLON SIGN

- NOTES:
- 15 1/2" x 0.8" x 1 1/2" ALUMINUM SPACER FRAME.
 - FLAT ALUMINUM RETAINER.
 - ALUMINUM ANGLE FRAME SUPPORT.
 - GE TETRA MAX 7100K WHITE LED'S AS REQUIRED. (OR GE REPLACEMENT EQUIVALENT).
 - LED POWER SUPPLY, AS REQUIRED.
 - INTERNAL DISCONNECT SWITCH.
 - SUPPORT TUBE.
 - FACES TO BE FLAT CLEAR SOLAR GRADE POLYCARBONATE 2ND SURFACE PAINTED DECORATION.
 - "DUNKIN'" LETTERS TO BE EMBOSSED.
 - REGISTERED "R" AND "DRIVE-THRU" TO BE FLAT GRAPHIC.
 - 3M #3630-3123 DUNKIN' ORANGE TRANSLUCENT FILM 2ND SURFACE.
 - 3M #3630-1379 DUNKIN' PINK TRANSLUCENT FILM 2ND SURFACE.
 - BACKGROUND COLOR TO BE 403 WHITE BACK-SPRAY.
 - OPTION: SIGN FACE 2ND SURFACE WHITE FACE/ NIGHT FACE. BACKGROUND COLOR 403 WHITE BACK-SPRAY, BACKED UP WITH OPAQUE SILVER FOR COMPLETE OPAQUE FINISH FOR NIGHT.
 - SCOTCHCAL 3630-108 PINK TRANSLUCENT FILM 2ND SURFACE.
 - SCOTCHCAL 3630-157 SULTAN BLUE TRANSLUCENT FILM 2ND SURFACE.

- ADDITIONAL NOTES:
- ARTWORK FONT: DUNKIN SANS DISPLAY
 - EXTERIOR FINISH: PAINT PANTONE 7540C
 - INTERIOR FINISH: PAINTED REFLECTIVE WHITE
 - ACCENT FINISH: 1 1/2" CABINET W/ RETAINER: PAINT PANTONE 7540C
 - RETAINERS/ FACE REMOVABLE FOR SERVICE ACCESS
 - HANGER BAR INCLUDED ON 6" x 12" FACE
 - PLATE SIZE: 3/4" x 12" x 12"
 - BOLT PATTERN: 10"10"
 - U.L. LISTED
 - PERIMETER ANGLE: 1 1/2"x1 1/2"x 3/16"
 - ELECTRICAL: (1) 20-AMP / 120 VOLT CIRCUIT

COLORS:

| PMS | VINYL/PAINT |
|-------------------|--------------------------------|
| PMS 165 DD ORANGE | TRANS 3M #3630-3123 |
| PMS 219 DD PINK | TRANS 3M #3630-1379 |
| PMS 7540C DD GRAY | TRANS 3M #7725-41 |
| PMS COOL GRAY 1C | TRANS 3M #7725-11 |
| BR PINK | SCOTCHCAL 3630-108 PINK |
| BR BLUE | SCOTCHCAL 3630-157 SULTAN BLUE |

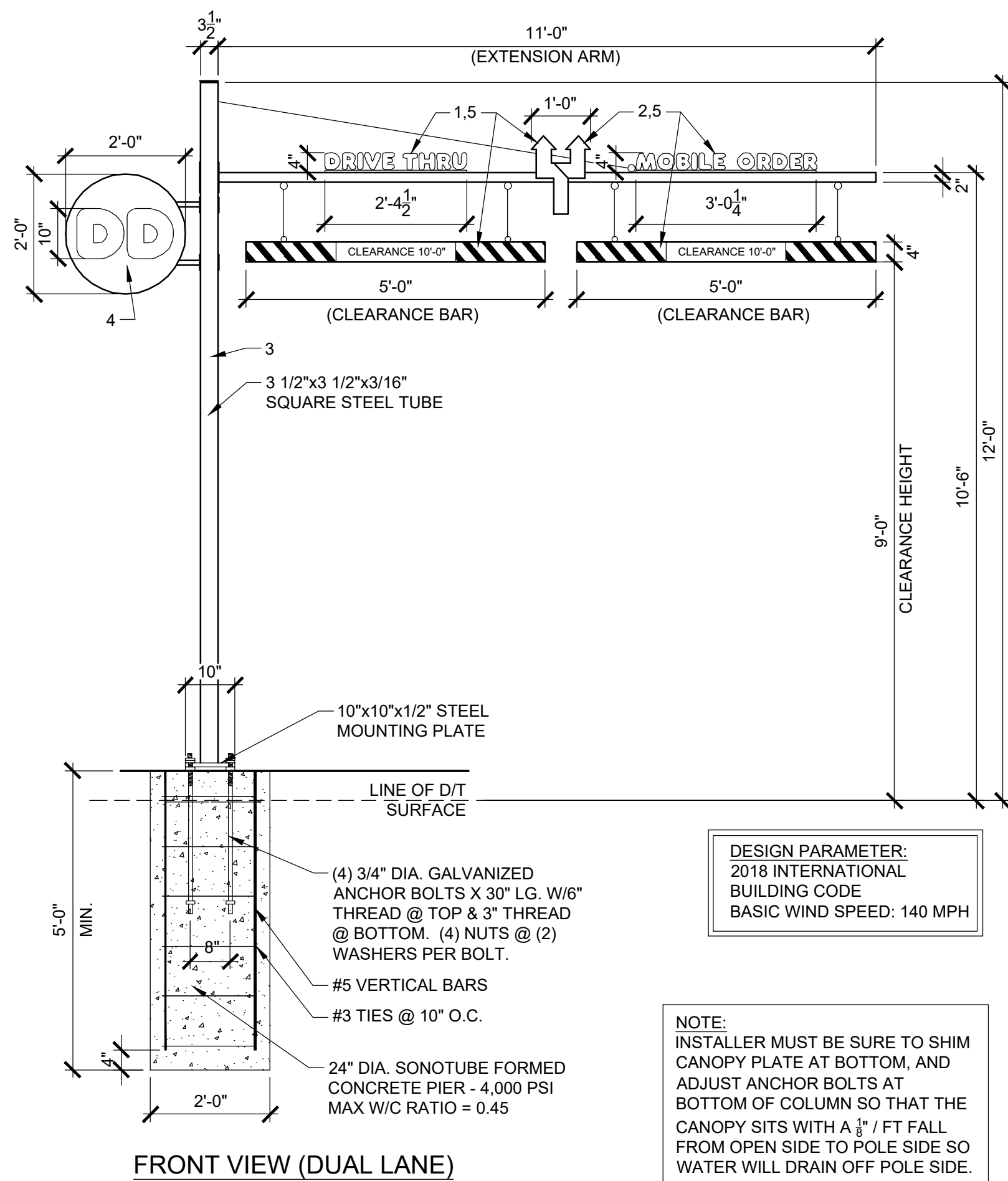
- INSTALLATION:
- BY OTHERS
 - NOTE: POWER BY OTHERS
 - THIS SIGN IS INTENDED TO BE INSTALLED IN ACCORDANCE WITH THE REQUIREMENTS OF ARTICLE 600 OF THE NATIONAL ELECTRICAL CODE (NEC) AND/OR OTHER APPLICABLE LOCAL ELECTRICAL CODES (LEC). THIS INCLUDES PROPER GROUNDING AND BONDING OF THE SIGN.

NOTE:
 SEE DUNKIN' BRANDS WEBSITE, <http://extranet.dunkinbrands.com>, FOR COMPLETE INFORMATION AND DETAILS

NOTE:
 SEE DUNKIN' BRANDS WEBSITE, <http://extranet.dunkinbrands.com>, FOR COMPLETE INFORMATION AND DETAILS

5 PYLON SIGN DETAIL

1/2" = 1'-0" NOTE:



FRONT VIEW (DUAL LANE)

SIDE VIEW

DESIGN PARAMETER:
 2018 INTERNATIONAL BUILDING CODE
 BASIC WIND SPEED: 140 MPH

NOTE:
 INSTALLER MUST BE SURE TO SHIM CANOPY PLATE AT BOTTOM, AND ADJUST ANCHOR BOLTS AT BOTTOM OF COLUMN SO THAT THE CANOPY SITS WITH A 1/8" FT FALL FROM OPEN SIDE TO POLE SIDE SO WATER WILL DRAIN OFF POLE SIDE.

NON-ILLUMINATED DRIVE-THRU STRUCTURE

- NOTES:
- PAINT TO MATCH ORANGE PMS 165C, GLOSS FINISH.
 - PAINT TO MATCH PINK PMS 219C, GLOSS FINISH.
 - PAINT TO MATCH PMS COOL GRAY 1C, GLOSS FINISH.
 - OPTIONAL 24" x 24" MEDALLION SIGN WITH REMOVABLE / ADJUSTABLE PLATES, SINGLE SIDED VINYL.
 - OPTIONAL REFLECTIVE FILM:
 3M 14680CR-10 SCOTCHLITE REFLECTIVE MCS (LATEX OR SOLVENT INKS)
 8519 LUSTER PROTECTIVE LAMINATE PRINTED TO MATCH.
- PMS 165 DUNKIN' ORANGE
 - PMS 219 DUNKIN' PINK
 - PMS 7540C DUNKIN' GRAY
 - PMS COOL GRAY 1C

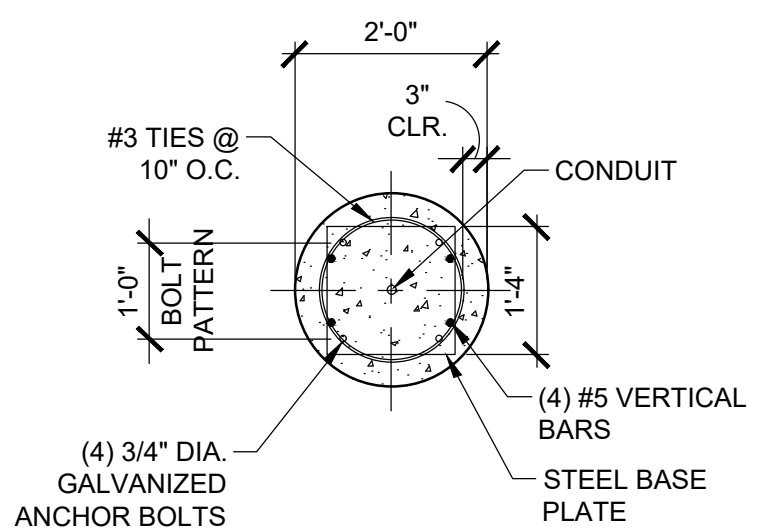
COLORS:

| PMS | VINYL/PAINT |
|-------------------|---------------------|
| PMS 165 DD ORANGE | TRANS 3M #3630-3123 |
| PMS 219 DD PINK | TRANS 3M #3630-1379 |
| PMS 7540C DD GRAY | TRANS 3M #7725-41 |
| PMS COOL GRAY 1C | TRANS 3M #7725-11 |

NOTE:
 SEE DUNKIN' BRANDS WEBSITE, <http://extranet.dunkinbrands.com>, FOR COMPLETE INFORMATION AND DETAILS

- ADDITIONAL NOTES:
- ARTWORK FONT: DUNKIN SANS DISPLAY
 - 120 VOLT CIRCUIT, TO BE CONFIRMED BY SITE
 - CLEARANCE TO BE CONFIRMED BY SITE

NOTE:
 1. G.C. TO VERIFY BASE PLATE DIMENSIONS WITH MANUFACTURER OF DRIVE THRU ELEMENT AND NOTIFY ARCHITECT OF ANY DISCREPANCIES



BASE PLATE DETAIL

4 DUAL VEHICLE CLEARANCE BAR DETAIL

1/2" = 1'-0" NOTE:

| Rev. No. | Drawing Issues | Revisions | Date |
|----------|----------------|-----------|------|
| | | | |

NJ: AI 13332
 NY: 025618
 FL: AR95762
 WI: 11180-5
 D.C.: ARC101838
 GA: RA 019863
 VA: 40103373
 NC: 11736

CT: ARI0009367
 DE: SS-0007765
 MD: 14129
 SC: 8935
 MA: 10610
 MI: 1301064135
 IL: 001023586
 WV: 4569
 NH: 004487

Gary Kliesch
 A.I.A., N.A.A.S.P., N.C.I.D.

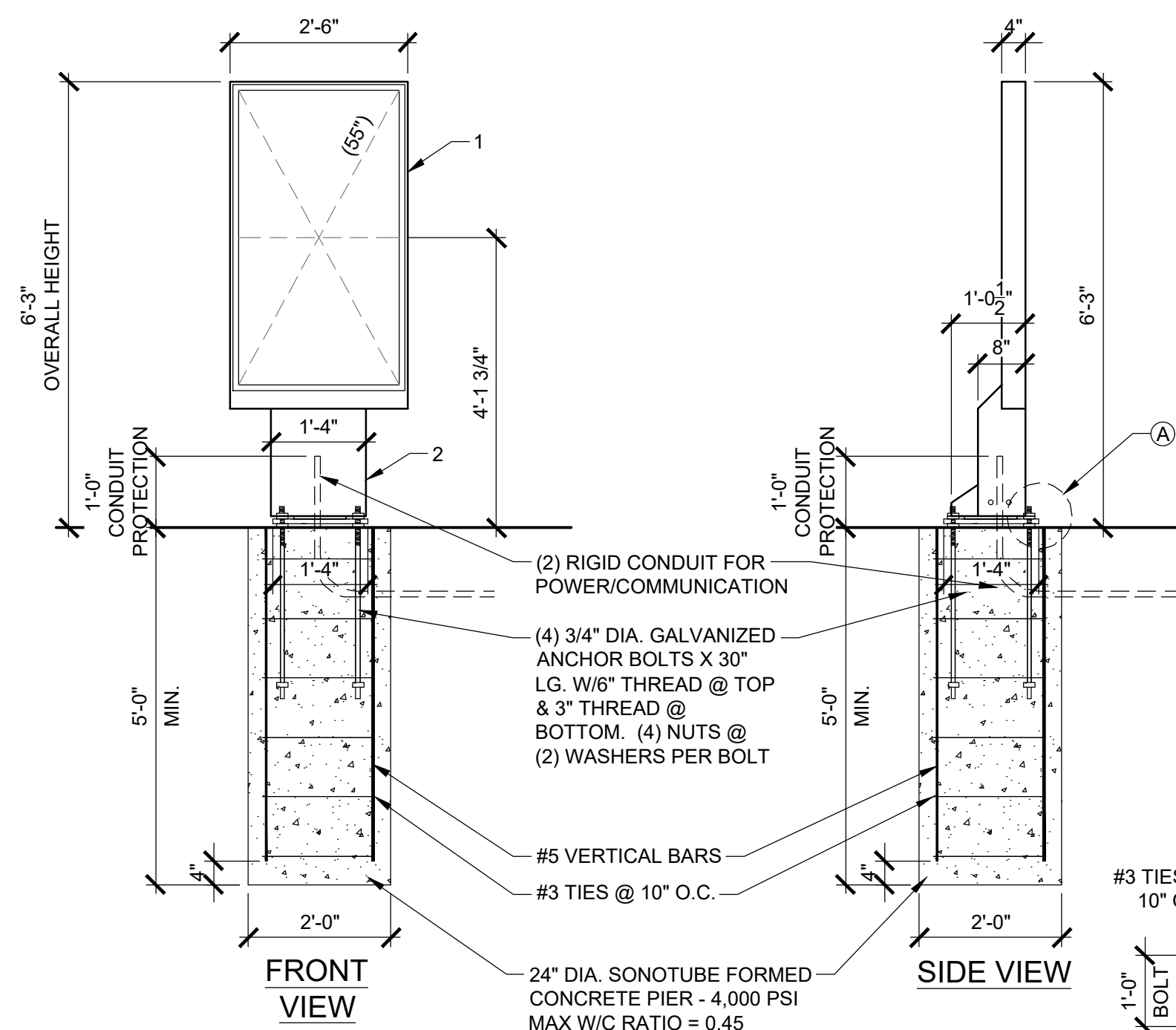
Proposed

DUNKIN'
 baskinBRobbins

BLOCK 20.10 Lot 5.01 80 Godwin Ave.
 Midland Park, NJ
 PC#359942

Drawing Title:
 SITE AND SIGNAGE DETAILS

| | |
|-------------------|---------------------|
| Date: 03/18/21 | Dwg No. A 5.0 |
| Drawn By: AT | |
| Checked By: CF | |
| Job No: 20-205 | 5 of 6 |



DIGITAL PREVIEW BOARD

NOTES:

- PREVIEW BOARD IS POWDER COATED TO MATCH PMS 7540C (CABINET, BASE CLADDING, DOOR FRAMES & EXTENDER FRAMES).
- ACCESS COVER TO MEDIA PLAYER(S), ROUTER AND ELECTRICAL RECEPTACLES SECURED BY SECURITY HARDWARE.

ADDITIONAL NOTES:

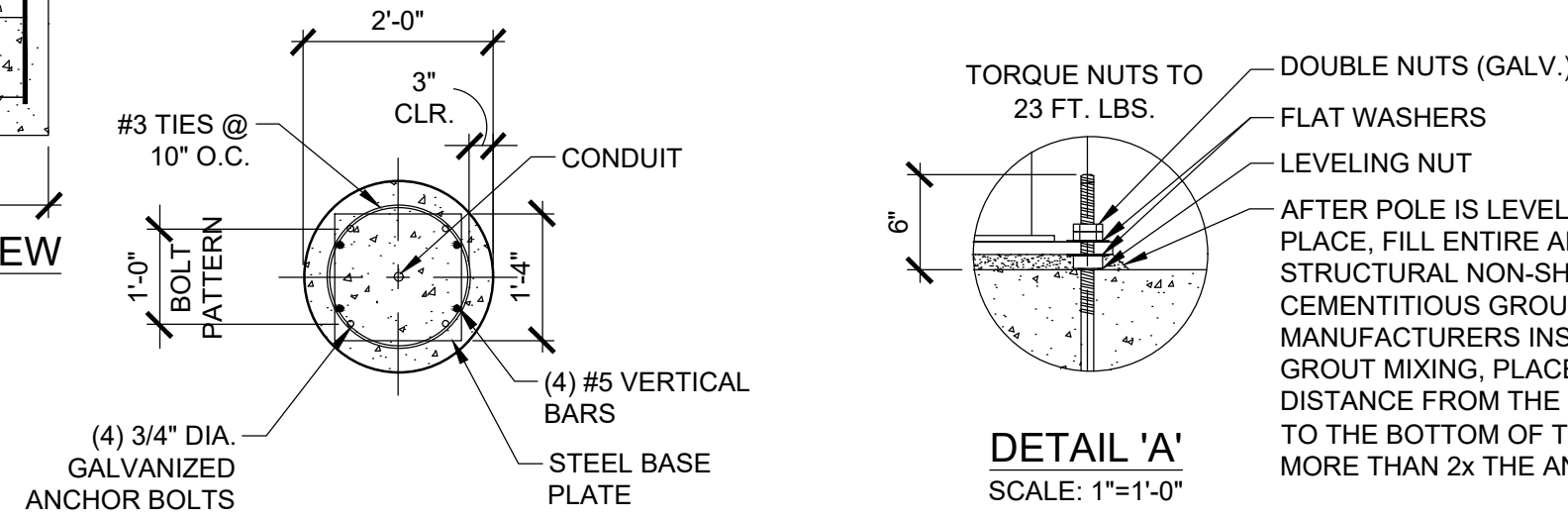
- ARTWORK FONT: DUNKIN SANS DISPLAY
- MATERIALS: 22GA. GALVANNEL STEEL, ALUMINUM EXTRUSION
- ACCESS: HINGED REAR DOOR FASTENED BY SECURITY HARDWARE

COLORS:

| PMS | VINYL/PAINT |
|-------------------|---------------------|
| PMS 165 DD ORANGE | TRANS 3M #3630-3123 |
| PMS 219 DD PINK | TRANS 3M #3630-1379 |
| PMS 7540C DD GRAY | TRANS 3M #7725-41 |
| PMS COOL GRAY 1C | TRANS 3M #7725-11 |

NOTE:
SEE DUNKIN' BRANDS WEBSITE, <http://extranet.dunkinbrands.com>, FOR COMPLETE INFORMATION AND DETAILS

NOTE:
1. G.C. TO VERIFY BASE PLATE DIMENSIONS WITH MANUFACTURER OF DRIVE THRU ELEMENT AND NOTIFY ARCHITECT OF ANY DISCREPANCIES

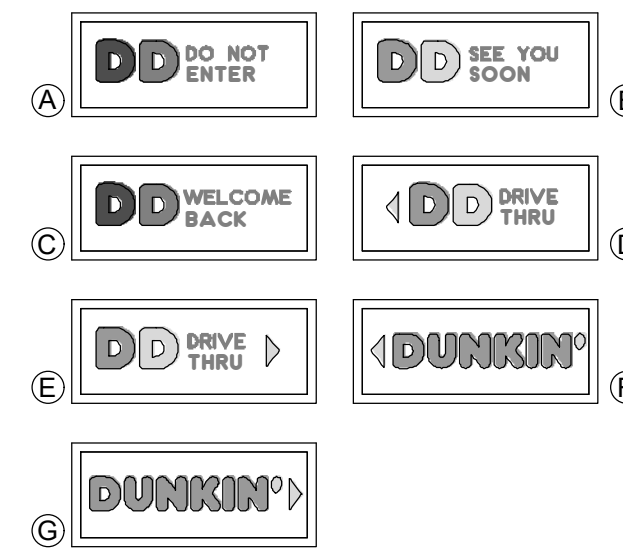
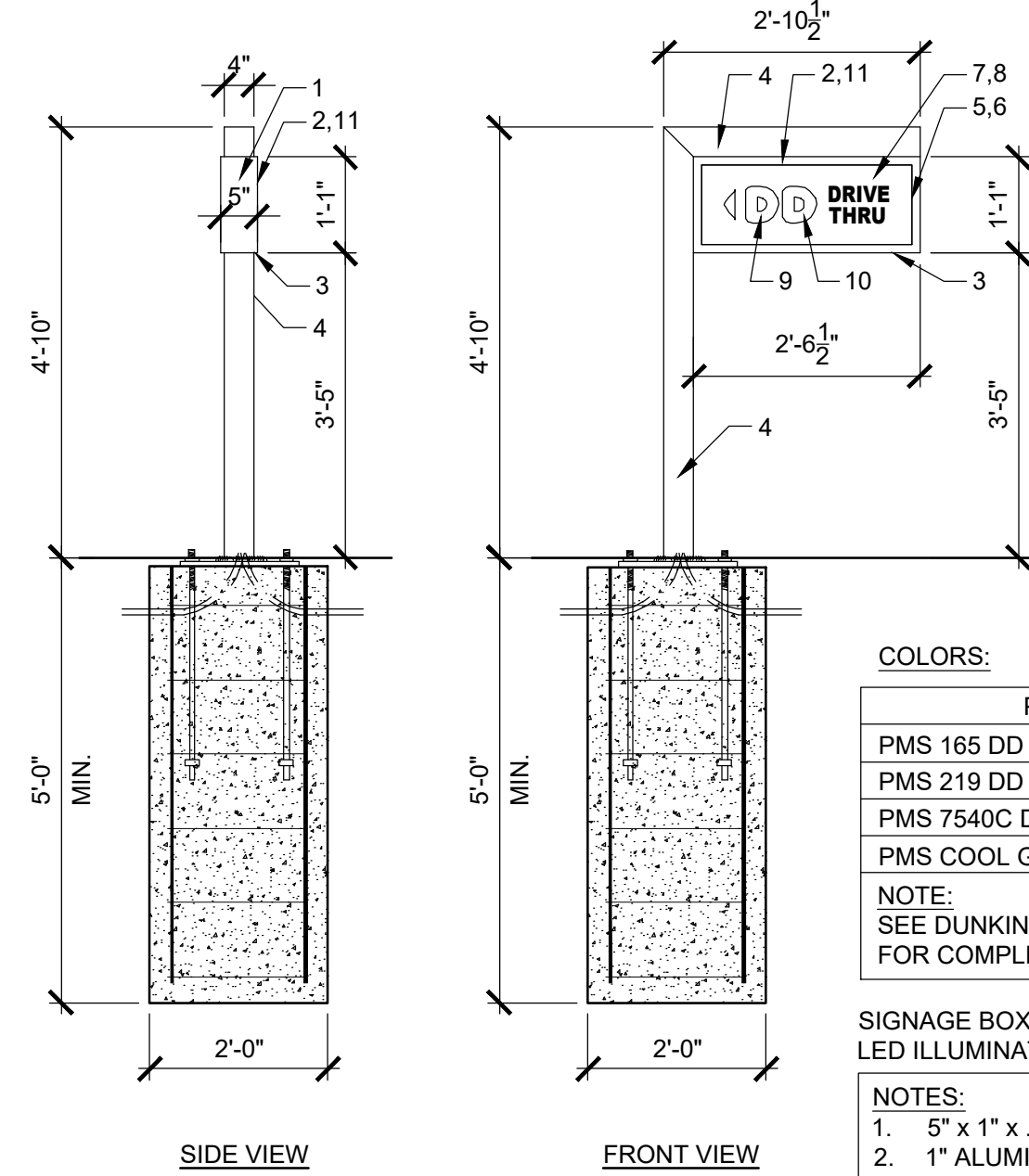


BASE PLATE DETAIL

DESIGN PARAMETER:
2018 INTERNATIONAL BUILDING CODE
BASIC WIND SPEED: 140 MPH

1 DIGITAL PREVIEW BOARD DETAILS

1/2" = 1'-0" NOTE:



SIGN FACES

COLORS:

| PMS | VINYL/PAINT |
|-------------------|---------------------|
| PMS 165 DD ORANGE | TRANS 3M #3630-3123 |
| PMS 219 DD PINK | TRANS 3M #3630-1379 |
| PMS 7540C DD GRAY | TRANS 3M #7725-41 |
| PMS COOL GRAY 1C | TRANS 3M #7725-11 |

NOTE:
SEE DUNKIN' BRANDS WEBSITE, <http://extranet.dunkinbrands.com>, FOR COMPLETE INFORMATION AND DETAILS

SIGNAGE BOX AREA: 2.75 SQ. FT.
LED ILLUMINATED DIRECTIONAL SIGN

NOTES:

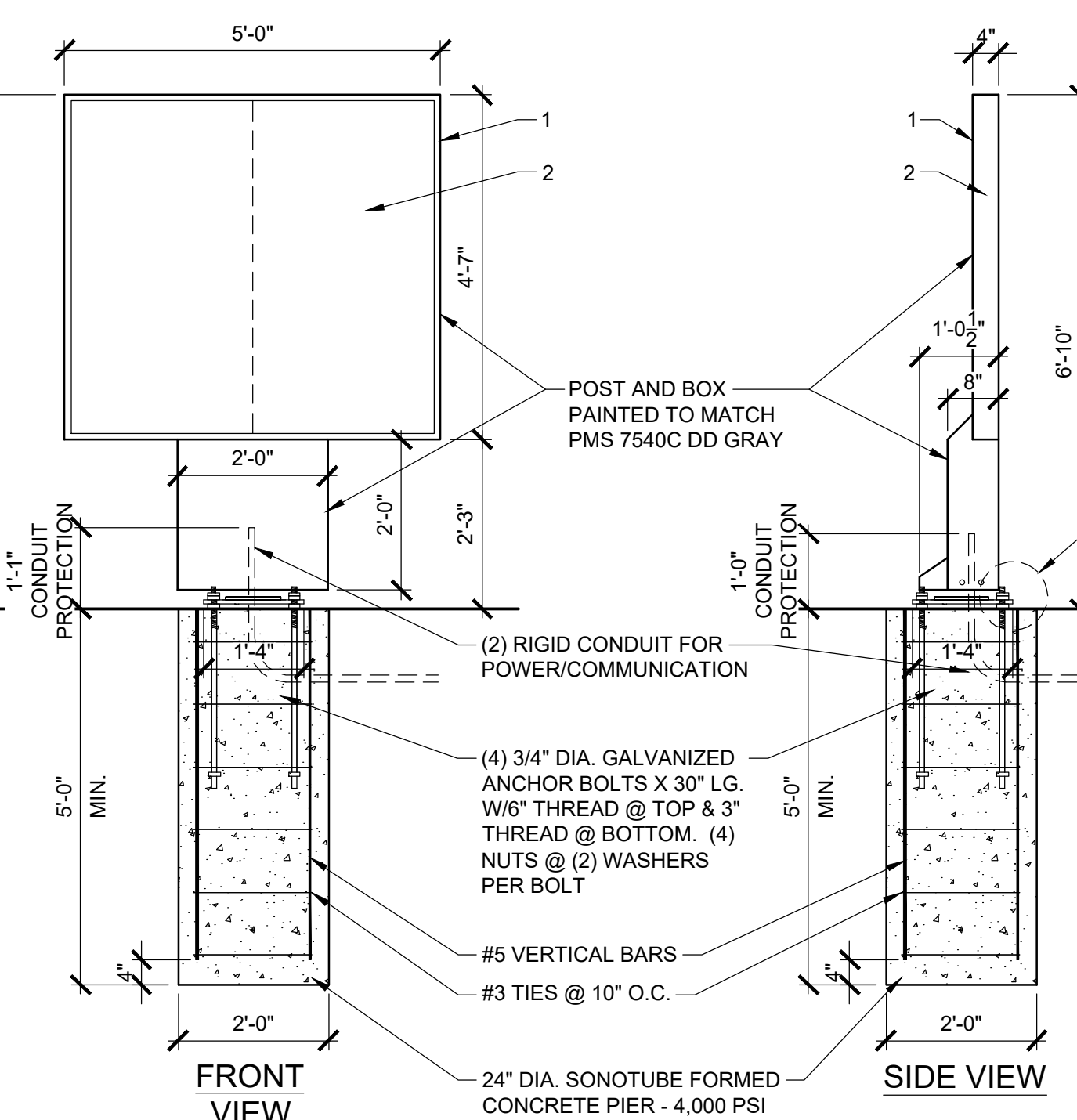
- 5" x 1" x .063" ALUMINUM SPACE FRAME.
- 1" ALUMINUM RETAINER.
- 1" x 1" x 1/8" ALUMINUM ANGLE.
- 4" x 4" x .075" SQUARE TUBE SUPPORT PAINTED ORANGE PMS 165C
- GE TETRA MAX 7100K WHITE LED'S (OR GE REPLACEMENT EQUIVALENT).
- LED POWER SUPPLIES, AS REQUIRED.
- 118" CLEAR SOLAR GRADE POLYCARBONATE FACE 2ND SURFACE.
- BACKGROUND COLOR TO BE 403 WHITE BACK-SPRAY.
- 3M #3630-3123 DUNKIN' ORANGE TRANSLUCENT FILM 2ND SURFACE.
- 3M #3630-1379 DUNKIN' PINK TRANSLUCENT FILM 2ND SURFACE.
- 3M #7125-41 DUNKIN' GRAY TRANSLUCENT FILM 2ND SURFACE.

ADDITIONAL NOTES:

- ARTWORK FONT: DUNKIN SANS DISPLAY
- EXTERIOR FINISH: PAINT PANTONE 7540C
- INTERIOR FINISH: PAINTED REFLECTIVE WHITE
- RETAINERS / FACE REMOVABLE FOR SERVICE ACCESS
- ELECTRICAL: (1) 20-AMP / 120 VOLT CIRCUIT
- U.L. LISTED

2 DIRECTIONAL SIGN DETAILS

1/2" = 1'-0" NOTE:



MULTIPLE PANEL DIGITAL MENU BOARDS

NOTES:

- MENUBOARD IS POWDER COATED TO MATCH PMS 7540C (CABINET, BASE CLADDING, DOOR FRAMES & EXTENDER FRAMES).
- SAMSUNG OHF SERIES DISPLAY MENUBOARDS, OHF55F - 55".

ADDITIONAL NOTES:

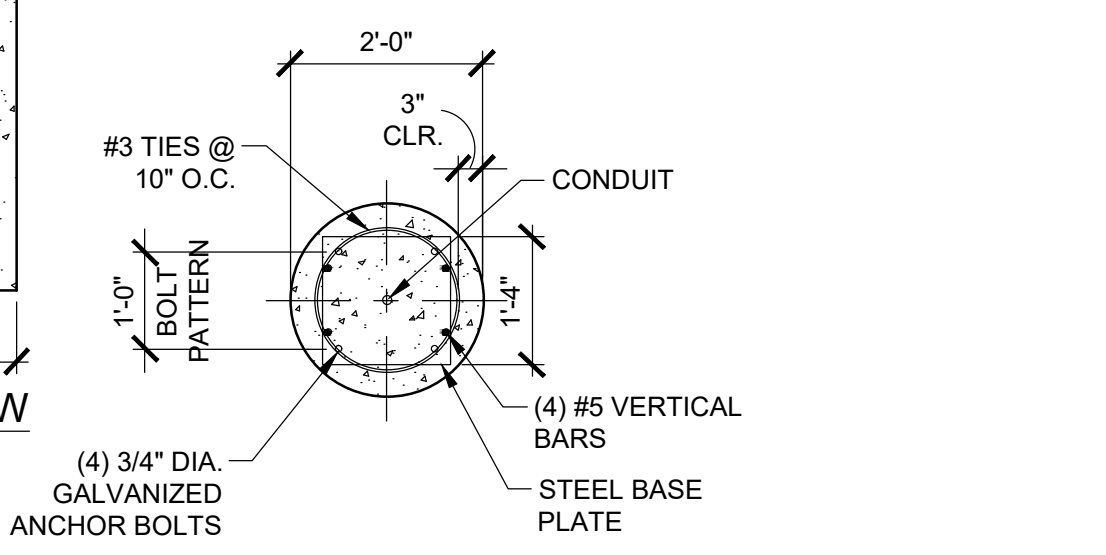
- ARTWORK FONT: DUNKIN SANS DISPLAY

COLORS:

| PMS | VINYL/PAINT |
|-------------------|---------------------|
| PMS 165 DD ORANGE | TRANS 3M #3630-3123 |
| PMS 219 DD PINK | TRANS 3M #3630-1379 |
| PMS 7540C DD GRAY | TRANS 3M #7725-41 |
| PMS COOL GRAY 1C | TRANS 3M #7725-11 |

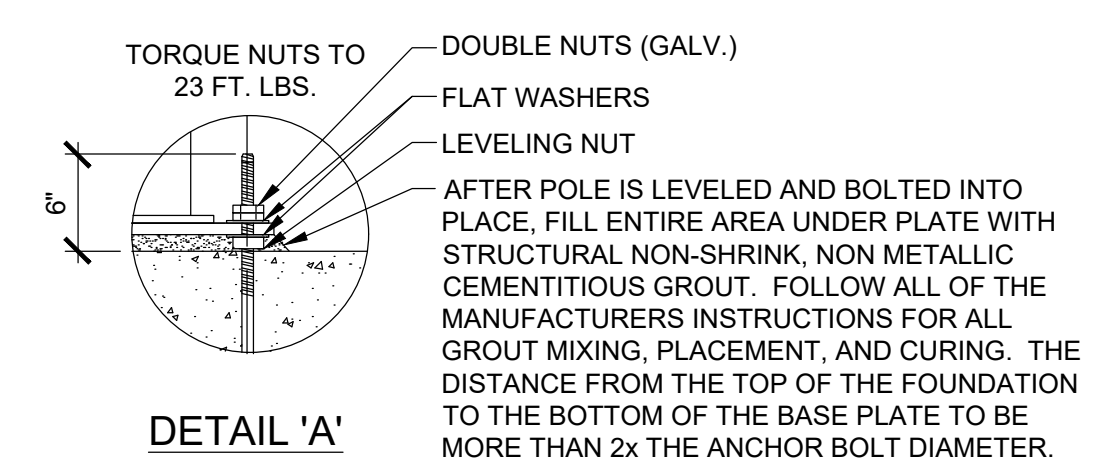
NOTE:
SEE DUNKIN' BRANDS WEBSITE, <http://extranet.dunkinbrands.com>, FOR COMPLETE INFORMATION AND DETAILS

NOTE:
1. G.C. TO VERIFY BASE PLATE DIMENSIONS WITH MANUFACTURER OF DRIVE THRU ELEMENT AND NOTIFY ARCHITECT OF ANY DISCREPANCIES



BASE PLATE DETAIL

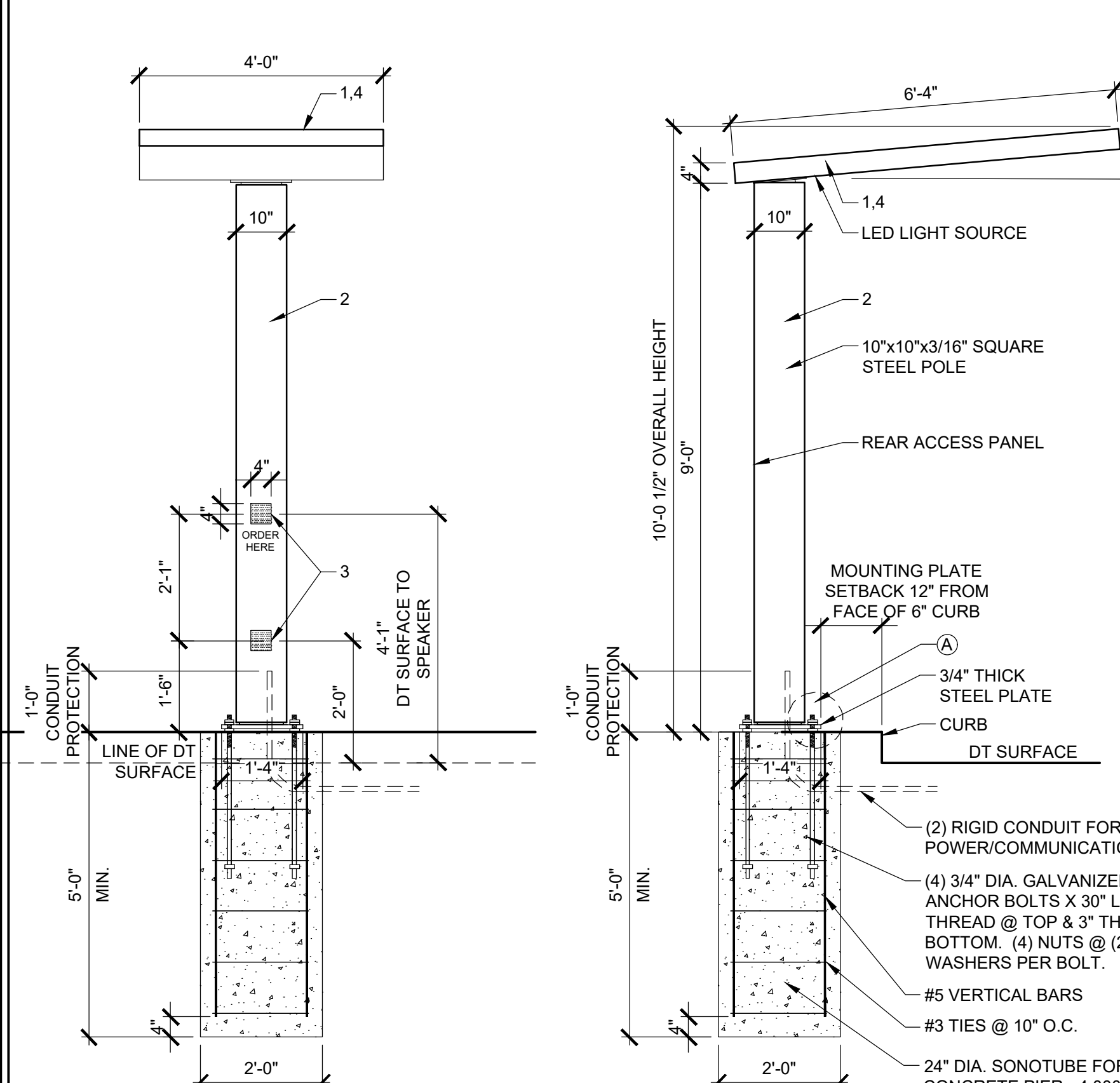
DESIGN PARAMETER:
2018 INTERNATIONAL BUILDING CODE
BASIC WIND SPEED: 140 MPH



DETAIL 'A'
SCALE: 1"=1'-0"

3 DRIVE-THRU DIGITAL MENU BOARD DETAIL

N.T.S. NOTE:



ILLUMINATED DRIVE-THRU CANOPY SIGN

NOTES:

- PAINT TO MATCH ORANGE PMS 165C, GLOSS FINISH.
- PAINT TO MATCH PMS COOL GRAY 1C, GLOSS FINISH.
- BLACK VINYL, ARLON 2100-03, MIC BY OTHERS.
- BREAKAWAY SWIVEL TOP.

ADDITIONAL NOTES:

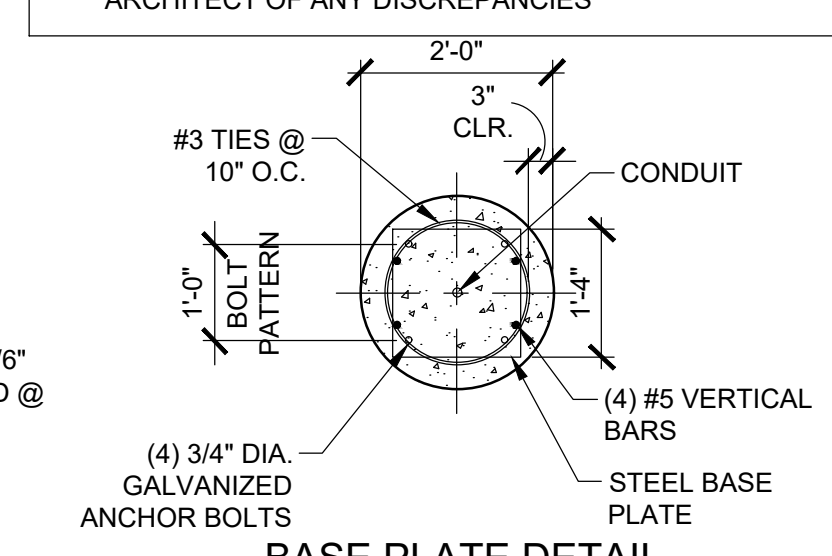
- ARTWORK FONT: DUNKIN SANS DISPLAY
- 120 VOLT CIRCUIT, TO BE CONFIRMED BY SITE
- CLEARANCE TO BE CONFIRMED BY SITE
- TOP HAS TWO DOWN LIGHTS

COLORS:

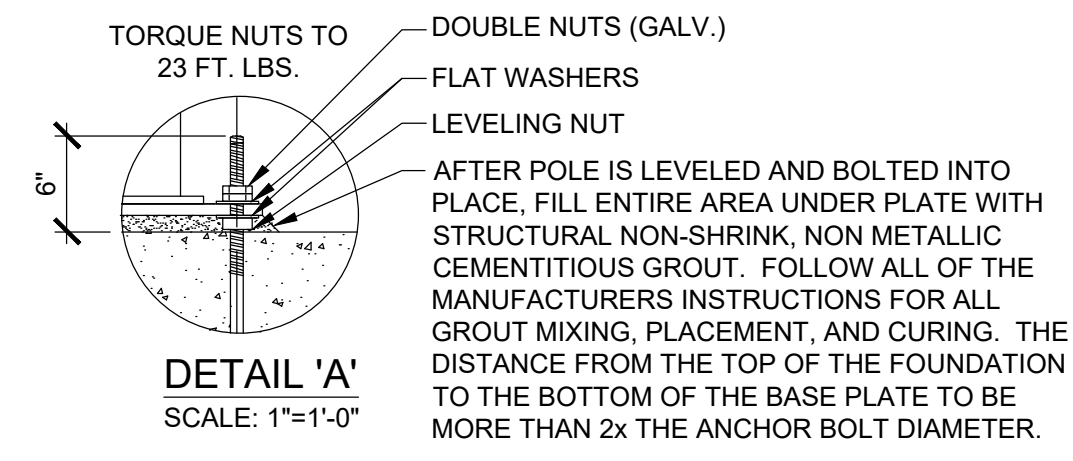
| PMS | VINYL/PAINT |
|-------------------|---------------------|
| PMS 165 DD ORANGE | TRANS 3M #3630-3123 |
| PMS 219 DD PINK | TRANS 3M #3630-1379 |
| PMS 7540C DD GRAY | TRANS 3M #7725-41 |
| PMS COOL GRAY 1C | TRANS 3M #7725-11 |

NOTE:
SEE DUNKIN' BRANDS WEBSITE, <http://extranet.dunkinbrands.com>, FOR COMPLETE INFORMATION AND DETAILS

NOTE:
1. G.C. TO VERIFY BASE PLATE DIMENSIONS WITH MANUFACTURER OF DRIVE THRU ELEMENT AND NOTIFY ARCHITECT OF ANY DISCREPANCIES



BASE PLATE DETAIL



DETAIL 'A'
SCALE: 1"=1'-0"

4 ORDER CANOPY DETAIL

1/2" = 1'-0" NOTE:

DESIGN PARAMETER:
2018 INTERNATIONAL BUILDING CODE
BASIC WIND SPEED: 140 MPH

| Rev. No. | Drawing Issues / Revisions | Date |
|----------|----------------------------|------|
| | | |

Gary Kliesch
A.I.A., N.A.A.S.P., N.C.D.

NJ: AI 13332
NY: 025618
FL: AR95762
WI: 11180-5
PA: RA-0151121B SC: 8935
GA: RA 013983
VA: 401016373
NC: 11736 WY: 4569 NH: 04487

NJCID: 21D00026000
CT: ARI0009367
DE: SS-0007765
MD: 14129
MI: 1301064135
MA: 10610
IL: 001.023586
WV: 4569 NH: 04487

Proposed

DUNKIN'
baskinBRobbins

BLOCK 20.10 Lot 5.01 80 Godwin Ave.
Midland Park, NJ
PC#359942

Drawing Title: SITE AND SIGNAGE DETAILS

| | |
|----------------|-----------|
| Date: 03/18/21 | Dwg No. A |
| Drawn By: AT | 6.0 |
| Checked By: CF | |
| Job No: 20-205 | 6 of 6 |