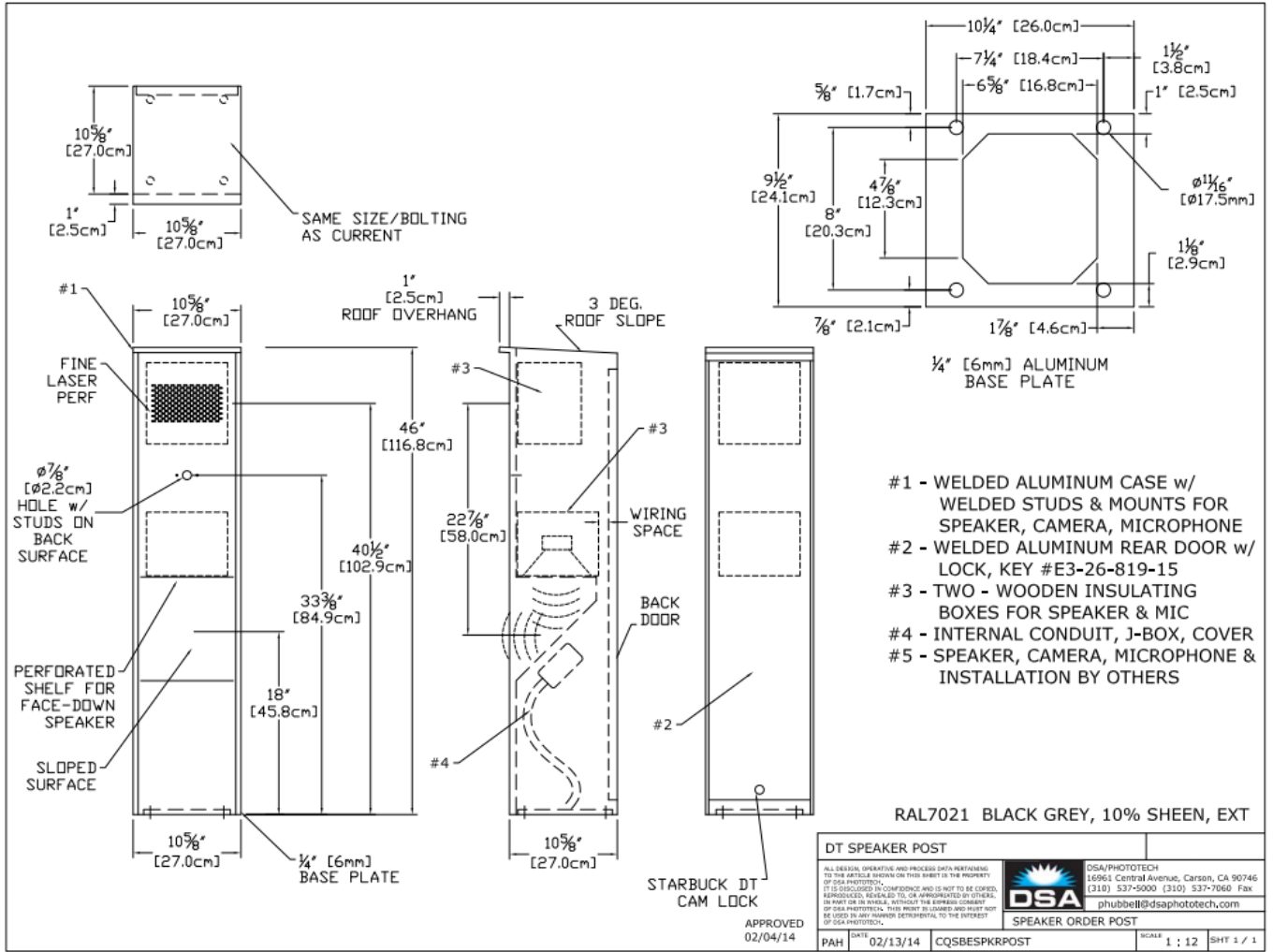


# Starbucks Speaker Volume Information



## Memo

### Re: Drive-Thru Sound Pressure Levels From the Menu Board or Speaker Post

The sound pressure levels from the menu board or speaker post are as follows:

1. Sound pressure level (SPL) contours (A weighted) were measured on a typical HME SPP2 speaker post. The test condition was for pink noise set to 84 dBA at 1 foot in front of the speaker. All measurements were conducted outside with the speaker post placed 8 feet from a non-absorbing building wall and at an oblique angle to the wall. These measurements should not be construed to guarantee performance with any particular speaker post in any particular environment. They are typical results obtained under the conditions described above.
2. The SPL levels are presented for different distances from the speaker post:

Distance from the Speaker (Feet)	SPL (dBA)
1 foot	84 dBA
2 feet	78 dBA
4 feet	72 dBA
8 feet	66 dBA
16 feet	60 dBA
32 feet	54 dBA

3. The above levels are based on factory recommended operating levels, which are preset for HME components and represent the optimum level for drive-thru operations in the majority of the installations.

Also, HME incorporates automatic volume control (AVC) into many of our Systems. AVC will adjust the outbound volume based on the outdoor, ambient noise level. When ambient noise levels naturally decrease at night, AVC will reduce the outbound volume on the system. See below for example:

Distance from Outside Speaker	Decibel Level of standard system with 45 dB of outside noise <u>without</u> AVC	Decibel level of standard system with 45 dB of outside noise <u>with</u> AVC active
1 foot	84 dBA	60 dBA
2 feet	78 dBA	54 dBA
4 feet	72 dBA	48 dBA
8 feet	66 dBA	42 dBA
16 feet	60 dBA	36 dBA

If there are any further questions regarding this issue please contact HME customer service at 1-800-848-4468.

Thank you for your interest in HME's products.